

EDI

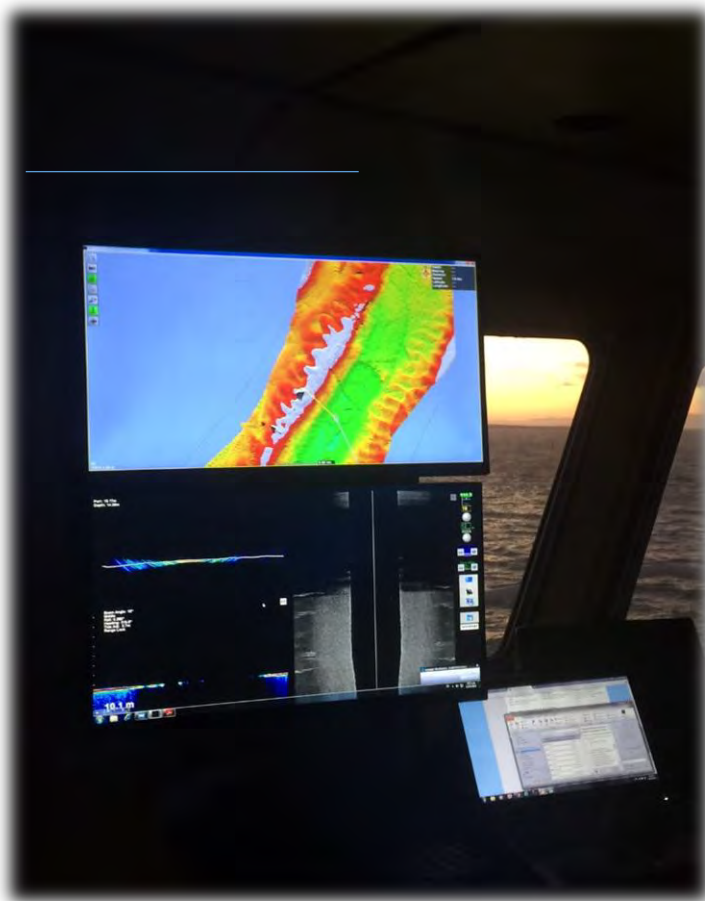
Bed Levelling / Utility Tug

EDI, Constructed in 2009 and refitted in 2014 to enable her to undertake bed levelling operations. Additionally, having recently been fitted with a new specifically designed 20t sweep bar and a multibeam bottom mapping system EDI is now undertaking operations in ports around Australia.

Being RTK satellite height and positioning enabled gives EDI the capability of conducting on board surveys in house, detecting material to less than 5cm accuracy in real time. Working independently, she alleviates the need for day to day client supplied surveys.

Recent projects include Port Melbourne, Northern Tasmania and Thevenard South Australia.

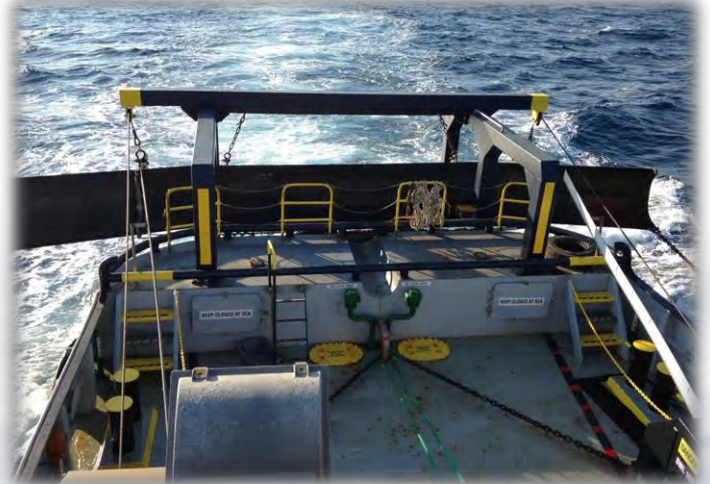
EDI's ability to operate with minimal crew and her low fuel consumption make her the ideal tug for cost effective bed levelling operations.



Standing out from other vessels, EDI's unique gantry and deck arrangement enable her to undertake towing operations with her sweep bar still in place, both offshore and inshore. This ability makes EDI a perfect utility tug for most required works on project.

EDI spec sheet is attached over leaf.

We welcome your enquiries and request for quotation.



Edi

Sweeper Tug

www.polarismarine.com.au



MAIN PARTICULARS

Design	Utility/Sweeper Tug
Year Built	2009
Flag	Australia
Survey	NSCV 2B
Class	N/A
GRT	163t
Max DWT	275t
Length	23.9m
Draft	2.9m
Deck Capacity	5t / m2

ELECTRONICS

Multibeam Survey	Yes
Bottom Mapping	Yes
RTK Satellite Positioning	Yes

PERFORMANCE

Max Speed	10kt
Bollard Pull	16.6t
Avg Fuel sweeping	35 lph

CAPACITIES

Fuel	89,000 L
Portable Water	29,500 L

DECK EQUIPMENT

Towing Hook	25t
Sweeper Bar	20t
Drum Capacity	N/A
Sweep Bar / Deck Winch	2 x 10t
Tow Winch	Yes
Stern Roller	Yes

AUXILIARY

Generator	2 x Cummins
Supply System	415 / 240 / 24V

PROPULSION & MACHINERY

Main Engines	KTA 19 M3
Power Rating	2 x 600 Bhp
Gear Boxes	WAF3641 6.048:1
Propellers	Twin Screw
Steering Gear	Props with Rudders

ACCOMMODATION

Berths	10
Air-conditioning	Yes



Gate 2, James Craig Road, Rozelle, New South Wales 2039
PO Box 1771, Rozelle, New South Wales 2039
T: +61 2 9563 8333 • F: +61 2 9563 8300 • E: admin@polarismarine.com.au

The particulars are believed to be correct, but are not guaranteed. Particulars given are entirely without warranty on accuracy.