



# VICTORIAN NOTICE TO MARINERS

The following Notice to Mariners is published for general information.

**MELBOURNE, 23 SEPTEMBER 2010**

**AUSTRALIA – VICTORIA**

**No. 93T - 2010**

**PORT PHILLIP**

**MAJOR WORKS EXCLUSION ZONE**

**MORNINGTON PIER**

- Date:** Effective immediately until 1700 hours on the 17/12/2010
- Previous Notice:** No. 084T-2010
- Details:** Mariners are advised of the demolition/reconstruction of a 53 meter section of Mornington Pier. These works will incorporate the use of a temporary exclusion zone during the works period.

<b>Mornington Pier Exclusion Zone</b>		
Exclusion zone within the area outlined by the following points		
Point	Easting	Southing
1	38° 12.696· S	145° 2.131· E
2	38° 12.675· S	145° 2.108· E
3	38° 12.724· S	145° 2.014· E
4	38° 12.730· S	145° 2.024· E
5	38° 12.753· S	145° 2.004· E
6	38° 12.757· S	145° 2.008· E
7	38° 12.736· S	145° 2.044· E
8	38° 12.740· S	145° 2.049· E

The exclusion zone extends for 20 meters around the entire pier and incorporates half of the loading bay situated in the harbour.

The exclusion zone will take immediate effect until the 17<sup>th</sup> December 2010 at 1700 hours.

Floating plant and hazards associated with the construction works will be marked from sunset to sunrise to IALA standards

**Mariners/swimmers/scuba divers are advised to remain outside the exclusion zone during the construction period.**

**Charts Affected:** AUS 143, 158

**Further Notice:** This Notice is self cancelling. No further Notice will be issued

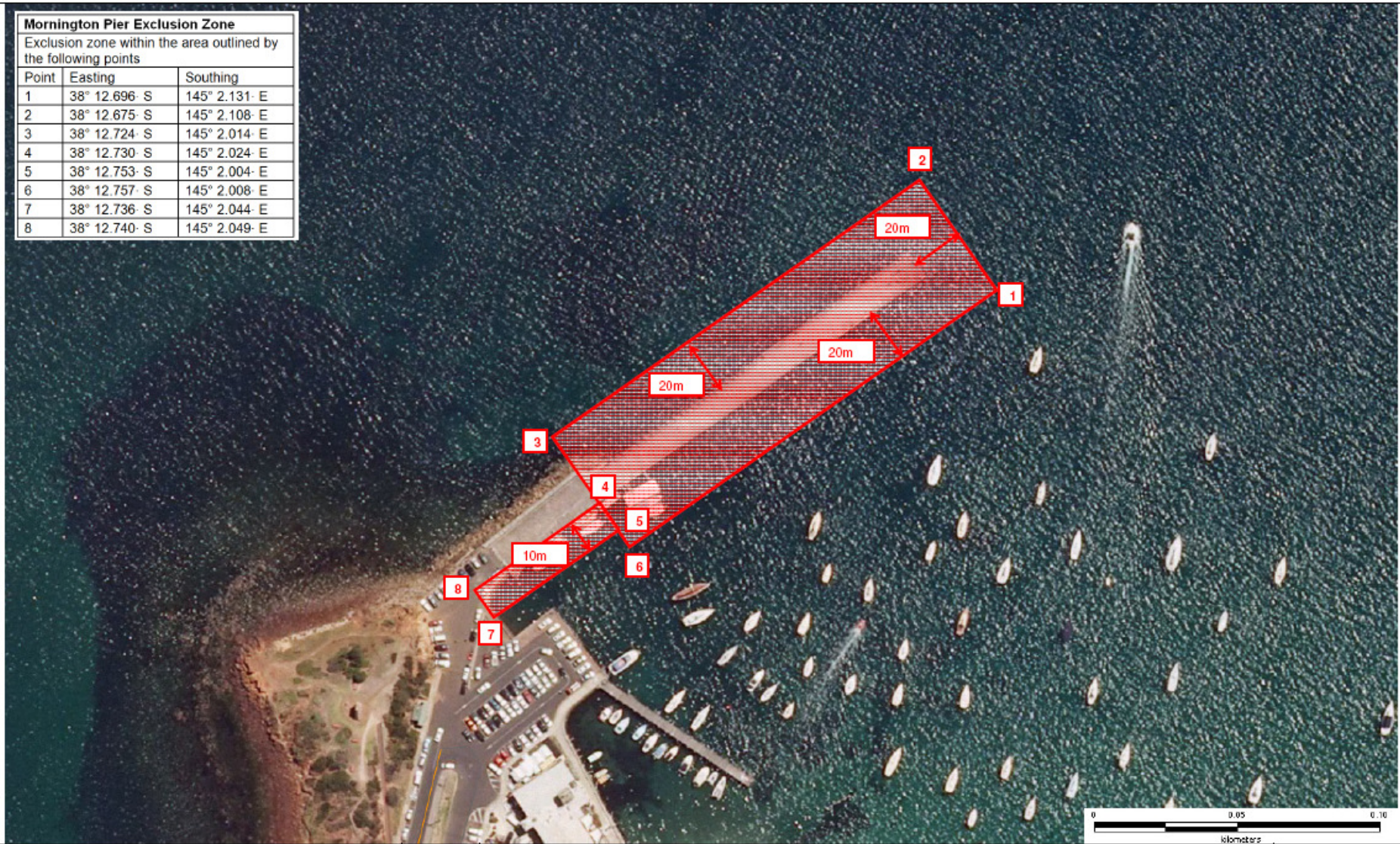
**If you require any further information please contact Parks Victoria on 13 1963**

**VIN WRIGHT  
MANAGER OF OPERATIONS  
BAYS AND MARITIME DIVISION**

If you wish to receive Parks Victoria issued Notice to Mariners, please email your details to [noticetomariners@parks.vic.gov.au](mailto:noticetomariners@parks.vic.gov.au) or visit [www.parkweb.vic.gov.au](http://www.parkweb.vic.gov.au) to view Notices.

*Healthy Parks  
Healthy People*

Mornington Pier Exclusion Zone		
Exclusion zone within the area outlined by the following points		
Point	Easting	Southing
1	38° 12.696 S	145° 2.131 E
2	38° 12.675 S	145° 2.108 E
3	38° 12.724 S	145° 2.014 E
4	38° 12.730 S	145° 2.024 E
5	38° 12.753 S	145° 2.004 E
6	38° 12.757 S	145° 2.008 E
7	38° 12.736 S	145° 2.044 E
8	38° 12.740 S	145° 2.049 E



Map Produced using Parks Victoria's ParkView Mapping System  
 Wednesday, 18 August 2010 at 3:49:35 PM

**Geocentric Datum of Australia (GDA94).** Map produced by Parks Victoria.  
 This map supersedes all previous editions. Data source acknowledgements:  
 State Digital MapBase, Victorian Flora Site Database & Atlas of Victorian Wildlife  
 © The State of Victoria, Department of Sustainability and Environment  
 The contribution of the Royal Botanical Gardens Melbourne to the database is  
 acknowledged.

Spatial Vision VicMap Books © Spatial Vision Pty Ltd 2007  
**For Internal Use Only.**



**Mornington Pier**  
 Works Exclusion Zone  
 SCALE 1:1250

