

VICTORIAN NOTICE TO MARINERS

No. 132 - 11

Pipe laying and Dredging Operations

Date: Commencing Wednesday 23 November 2011 until further notice.

Charts affected: Aus 140

Publication affected: Australian Pilot, Volume 2 (Tenth Edition, 2007) pages 86 – 89.

Buoyage system: IALA buoyage system – Region A

Details: Mariners are advised that Maritime Constructions (MC) will be carrying out the following operations in Portland Harbour.

1. Pipe laying: A pipe laying operation will commence on the 23 November 2011 to install a floating pipeline from the vicinity of the western extremity of Berth No. 6 to the north-west corner of the commercial port. A second pipe laying operation will commence on the 24 November 2011 to install a pipeline from the north-west corner of the commercial port to the lagoon area in the far north-west corner of the harbour for land reclamation works.
2. Dredging: The dredger "Ironheart" will be operating 24 hours a day, seven days a week in the vicinity of the western end of Berth No. 6 using moorings to wharves and anchors. A combination of a floating and submerged pipeline is being used to place the dredged material in the lagoon area. This work is expected to take between 4 to 6 weeks. The work and associated equipment will impact on the navigation of vessels in the harbour and mariners are advised to keep a good lookout when operating in the vicinity of the proposed works. Mariners are advised to observe all signage and proceed with caution in the vicinity of the dredger and the floating pipeline.

Whilst in position, the dredger will exhibit the appropriate lights and shapes as required by the International Regulations for the Prevention of Collisions at Sea.

The dredger can be contacted on 0409 091 619 or on VHF channel 14.

Please refer to the attached diagram for details.

Navigation channel: A 50 metre wide safe navigation channel across the path of the submerged pipeline will be established for commercial vessels to transit over the pipeline safely. The extremities of this channel are marked with buoys as follows:

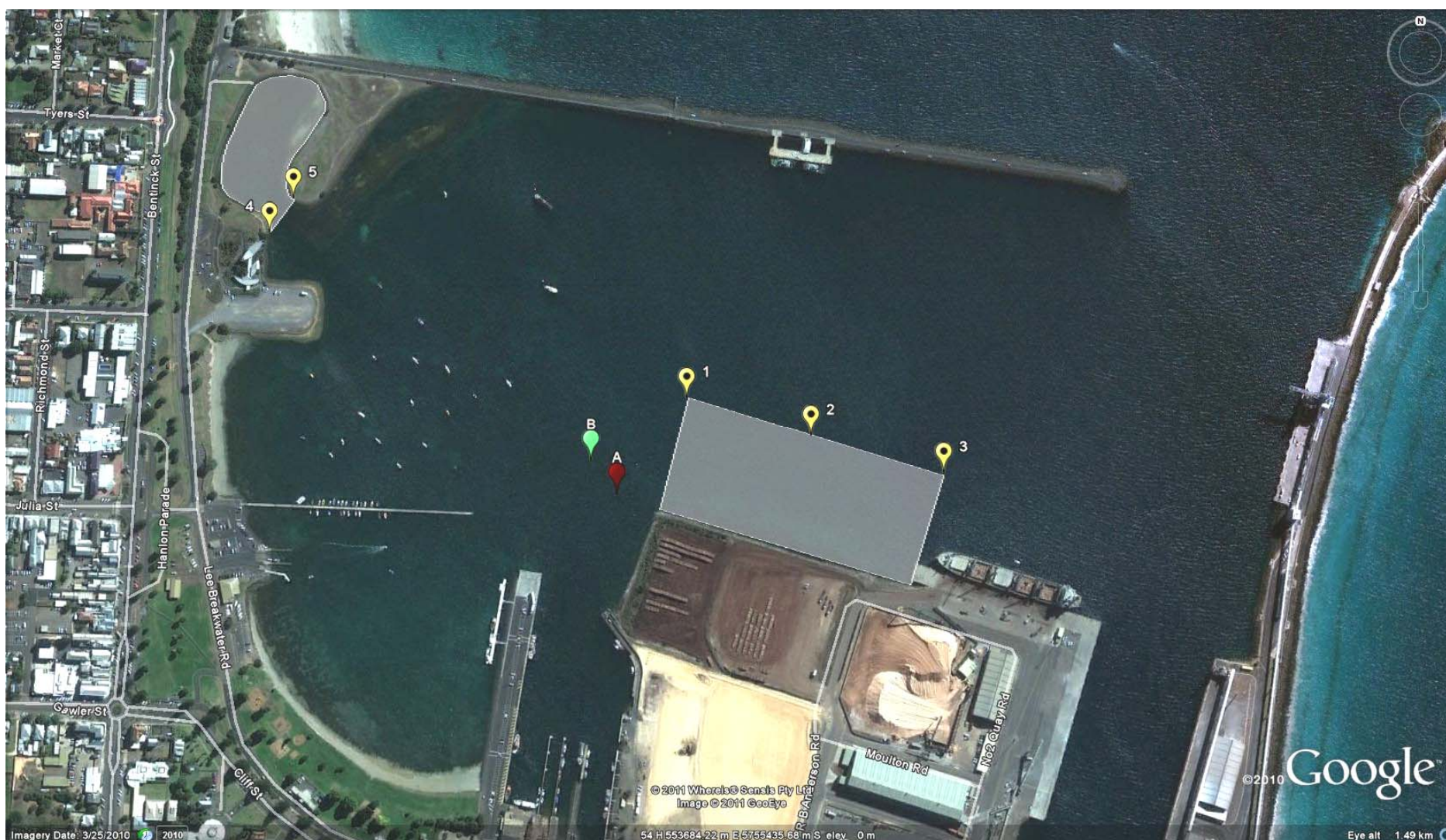
"A" - Port lateral mark (red buoy) with a Q Fl. R light (visibility 1-2 nautical miles) in position 38° 20'53.97" S, 141°36'46.10" E.

"B" - Starboard lateral mark (green buoy) with a Q Fl. G light (visibility 1-2 nautical miles) in position 38° 20' 52.7" S, 141° 36' 44.8" E.

Exclusion Zones (Grayed areas on the attached diagram): 2 exclusion zones have been established in the port as follows:

An area bounded by the north-west corner of the port; Point 1 in position 38°20'50.28"S, 141°36'49.48"E; Point 2 in position 38°20'51.74"S, 141°36'55.59"E; Point 3 in position 38°20'53.20"S, 141°37'2.09"E and the south-west corner of Berth No. 6. Points 1, 2 and 3 are marked by Yellow buoys with a Fl. W light. Access to all waters within this area are prohibited except to authorised vessels.

An area bounded by Point 4 in position 38°20'43.83"S, 141°36'28.77"E and Point 5 in position 38°20'42.45"S, 141°36'29.86"E and the waters to the north and west of Point 4 and Point 5. Access to all waters within this area are prohibited except to authorised vessels.



Further notice: A further notice to advise stakeholders of the completion of work will be issued at a later date.

Any inquiries to: Port Office during business hours on 5525 0900

Issued by:

Capt. Peter Gracias

Harbour Master

Mobile: 0418 551 821

E-mail: pgracias@portofportland.com.au