

## VICTORIAN NOTICE TO MARINERS No. 108 - 12 Marina Construction Operations

Date: Commencing Monday, 30 July 2012 until further notice  
Charts affected: Aus 140  
Publication affected: Australian Pilot, Volume 2 (Tenth Edition, 2007) pages 86 – 89  
Buoyage system: IALA buoyage system – Region A  
Details:

**Temporary Exclusion Zone in Portland Harbour. Access to all waters within this area is prohibited except to authorised vessels.**

Mariners are advised that Superior Floating Solutions (SFS) will be carrying out various operations associated with the construction of a new marina in the vicinity of the north-west corner of Portland Harbour.

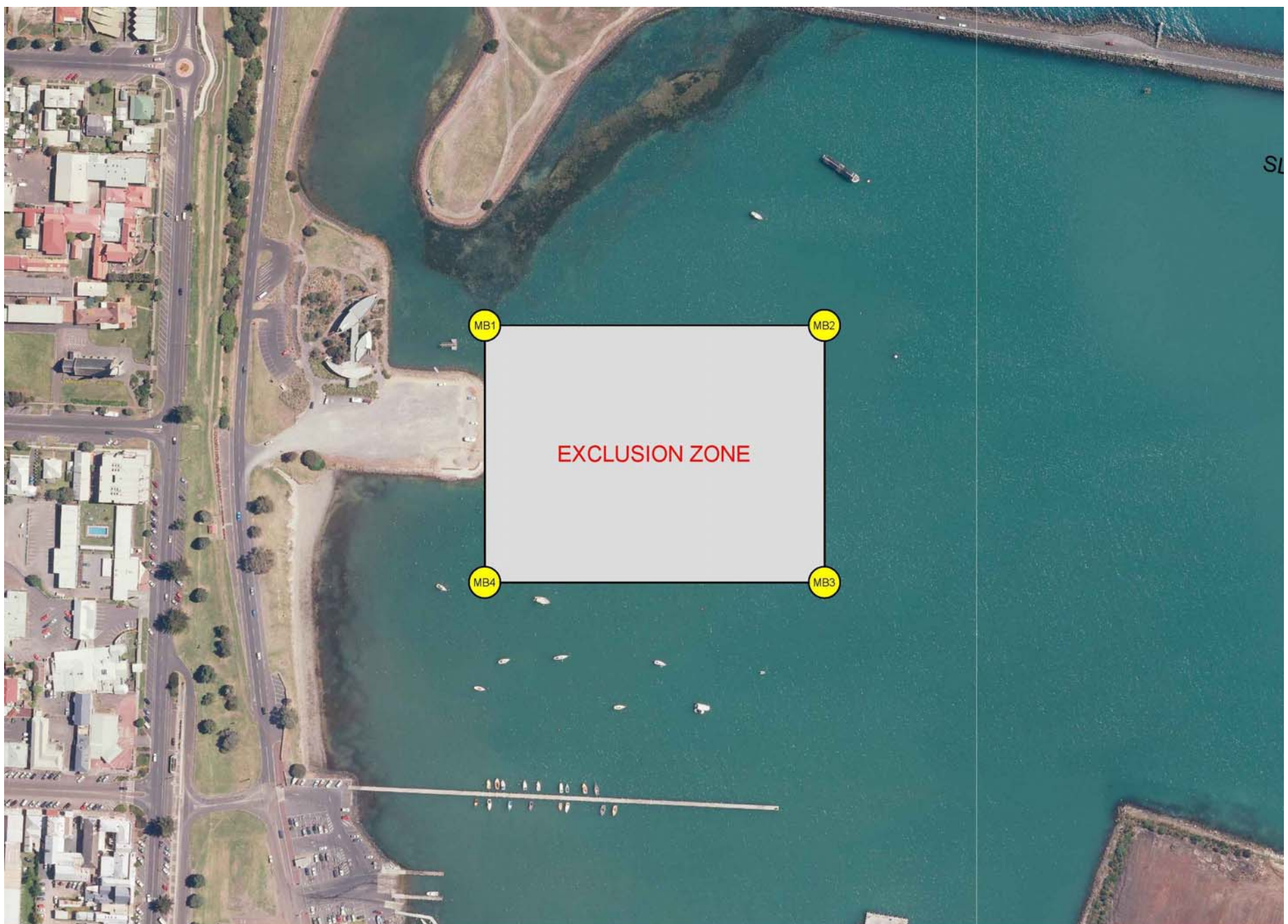
There will be various on-water construction activities taking place including pile driving and installation of floating jetties. Vessels will be operating within the Exclusion Zone from Monday to Saturday from 7am to 6pm.

If required, vessels/persons can contact the Project Manager, Mick Berry on 0403 465 026.

**Please refer to the diagram below for details.**

**Exclusion Zone (grey area in the diagram below): NO ENTRY PERMITTED EXCEPT TO AUTHORISED VESSELS.**

An area bounded by Point MB1 in position 38°20'44.80"S, 141°36'31.15"E; Point MB2 in position 38°20'44.75"S, 141°36'40.06"E; Point MB3 in position 38°20'50.07"S, 141°36'40.11"E and Point MB 4 in position 38°20'50.12"S, 141°36'31.19"E. These points are marked by Yellow buoys with a Fl. W light.



Further notice: A further notice to advise stakeholders of the completion of work will be issued at a later date.

Any inquiries to: Port Office during business hours on 5525 0900.

Issued by:  
Capt. Peter Gracias  
Harbour Master  
Mobile: 0418 551 821  
E-mail: pgracias@portofportland.com.au