

# VICTORIAN NOTICE TO MARINERS

The following Notice to Mariners is published for general information.

**GEELONG, 4 JUNE 2012**

**AUSTRALIA - VICTORIA**

**NO. 093 - 2012**

**PORT OF GEELONG**

## **POINT RICHARDS CHANNEL: AIS AIDS TO NAVIGATION**

**Date:** With immediate effect

**Details:** Three AIS ATON's (Aids TO Navigation) have been introduced into Geelong's Point Richards Channel from June 1, 2012 for a trial period of three months. They are:

- 1) On Point Richards Entrance Beacon (Real ATON), Identification Message.....**PR** (refer to attachment for WGS 84 chart position)
- 2) Between Beacon 4 and Beacon 6 (Virtual ATON), Identification Message.....**4A** (refer to attachment for WGS 84 chart position)
- 3) Between beacons 6 and Beacon 8 (Virtual ATON), Identification Message .....**6A** (refer to attachment for WGS 84 chart position)

Please refer to attachment for all details including MMSI's.

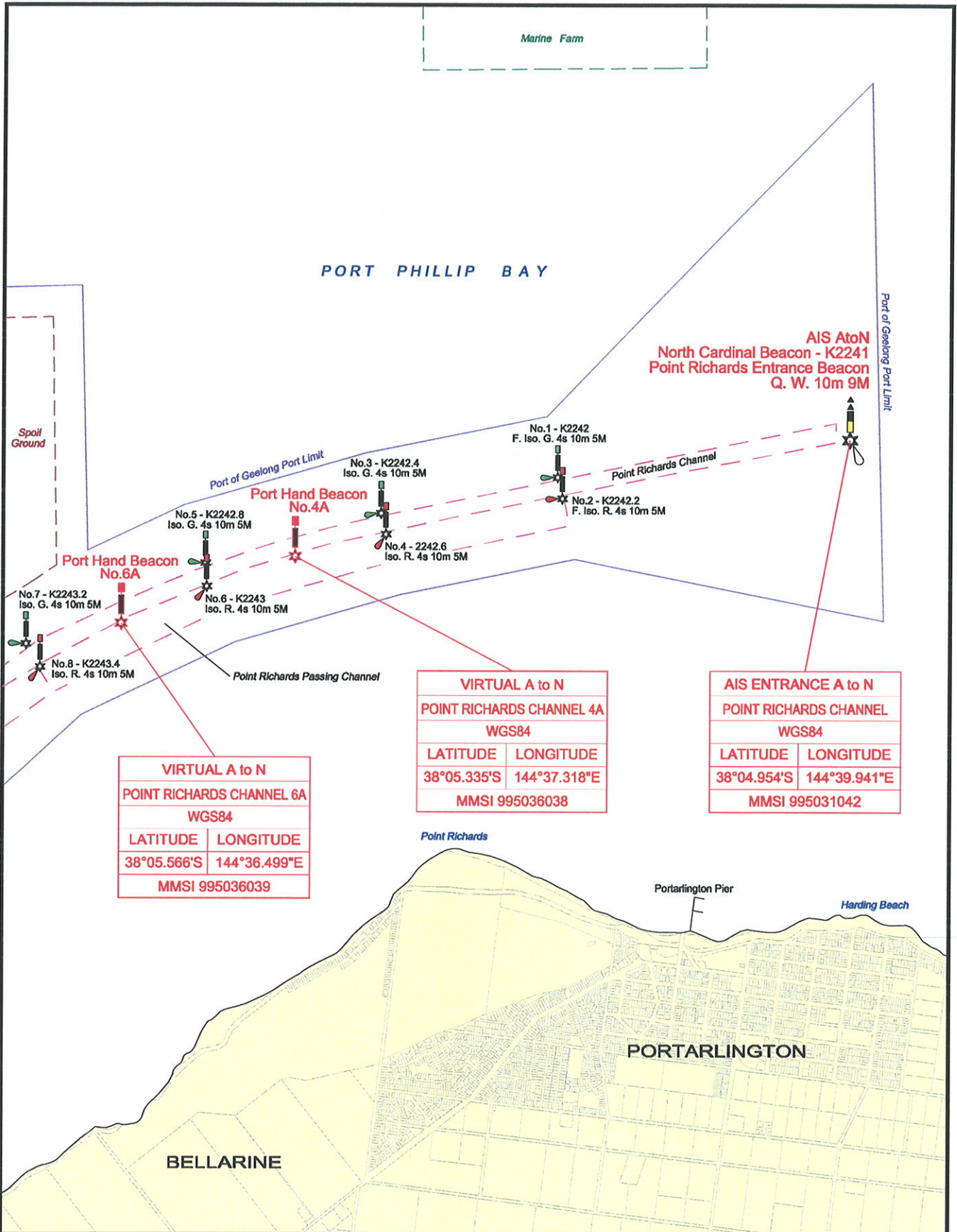
**Charts &** Aus 157

**Publications**

**Affected:**

**Further Notice:** Will be issued

**CAPTAIN DILIP ABRAHAM  
HARBOUR MASTER  
PORT OF GEELONG**



VIRTUAL A to N	
POINT RICHARDS CHANNEL 6A	
WGS84	
LATITUDE	LONGITUDE
38°05.566'S	144°36.499"E
MMSI 995036039	

VIRTUAL A to N	
POINT RICHARDS CHANNEL 4A	
WGS84	
LATITUDE	LONGITUDE
38°05.335'S	144°37.318"E
MMSI 995036038	

AIS ENTRANCE A to N	
POINT RICHARDS CHANNEL	
WGS84	
LATITUDE	LONGITUDE
38°04.954'S	144°39.941"E
MMSI 995031042	

Victorian Regional Channels Authority  
 Level 2  
 235 Rye St,  
 Geelong, 3220  
 VICTORIA  
 Ph. 03 5225 3500  
 Fax. 03 5225 3599

Scale in metres: 0, 500, 1000, 1500, 2000

**LEGEND**

- SHIPPING CHANNEL
- VRCA PORT BOUNDARY

Date: 4/6/2012

Sounding Datum: Chart Datum

Checked: D. Abraham

Format: A4

Revision:

Drawn: P. Bazalicki  
 Mapping & GIS Services  
 paulmap@hotmailkey.net.au

**VICTORIAN REGIONAL CHANNELS AUTHORITY**  
**PORT OF GEELONG**  
**VICTORIA**  
**POINT RICHARDS CHANNEL**  
**VIRTUAL AIS BEACONS**

Drawing No.: Point Richards Virtual Beacons 4A & 6A.dwg