

VICTORIAN NOTICE TO MARINERS

The following Notice to Mariners is published for general information.

GEELONG, 22 AUGUST 2012

AUSTRALIA - VICTORIA

NO. 115 - 2012

PORT OF GEELONG

POINT RICHARDS CHANNEL: AIS AIDS TO NAVIGATION ESTABLISHED

Date: With immediate effect

Former Notice : No 93-2012

Details: Three AIS ATON's (**Aids TO Navigation**) which were introduced to Geelong's Point Richards Channel for a trial period of three months (refer NTM 93-2012) have now been established permanently. Details are as below:

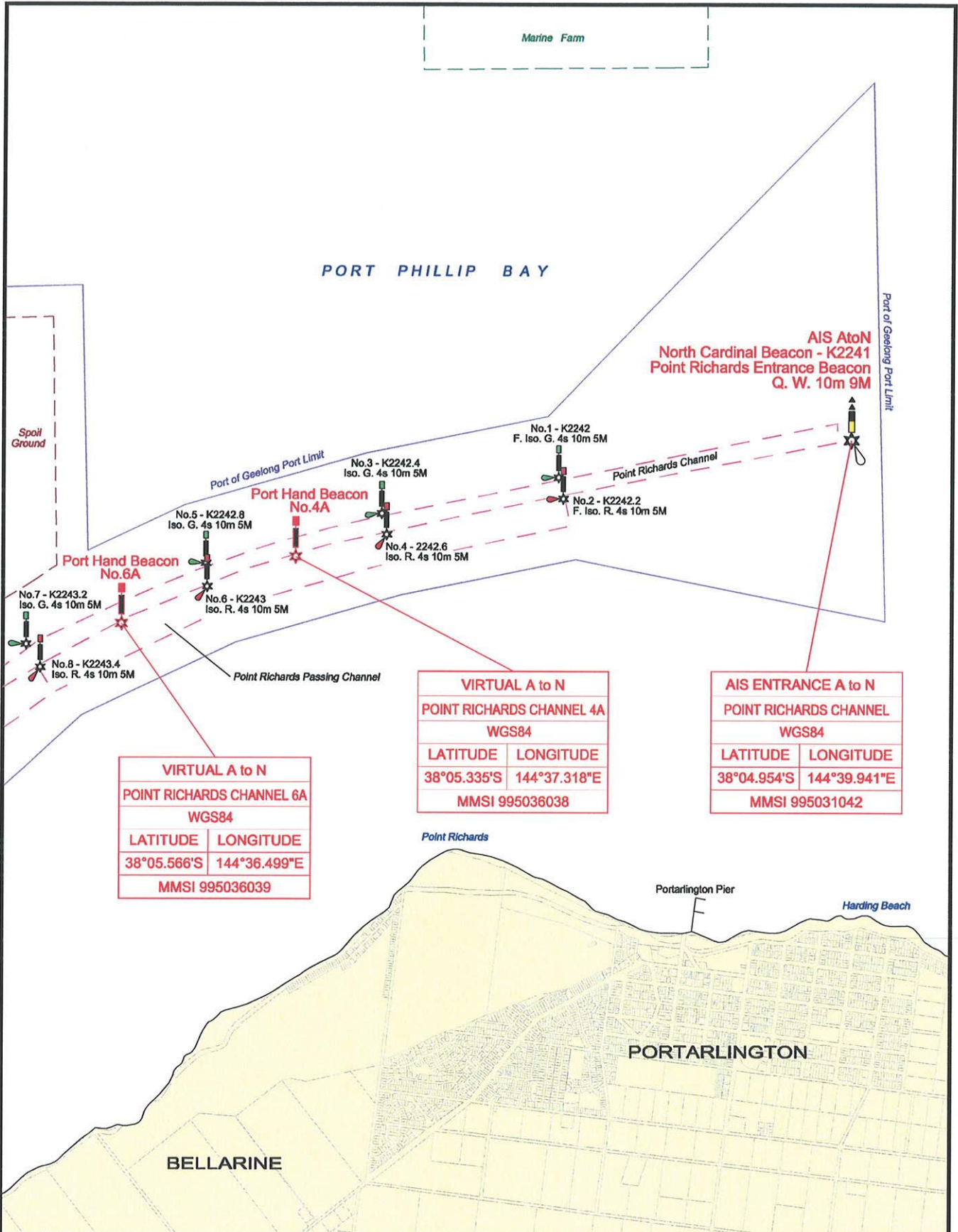
- 1) On Point Richards Entrance Beacon (**Real** ATON), Identification Message.....**PR** (refer to attachment for WGS 84 chart position)
- 2) Between Beacon 4 and Beacon 6 (**Virtual** ATON), Identification Message.....**4A** (refer to attachment for WGS 84 chart position)
- 3) Between beacons 6 and Beacon 8 (**Virtual** ATON), Identification Message**6A** (refer to attachment for WGS 84 chart position)

Mariners are reminded that the use of virtual beacons as an aid to navigation for position fixing should only be used in conjunction with other position fixing systems available to the vessel.

**Charts &
Publications
Affected:** Aus 157

Further Notice: No further notice will be issued.

**CAPTAIN DILIP ABRAHAM
HARBOUR MASTER
PORT OF GEELONG**



VIRTUAL A to N	
POINT RICHARDS CHANNEL 6A	
WGS84	
LATITUDE	LONGITUDE
38°05.566'S	144°36.499'E
MMSI 995036039	

VIRTUAL A to N	
POINT RICHARDS CHANNEL 4A	
WGS84	
LATITUDE	LONGITUDE
38°05.335'S	144°37.318'E
MMSI 995036038	

AIS ENTRANCE A to N	
POINT RICHARDS CHANNEL	
WGS84	
LATITUDE	LONGITUDE
38°04.954'S	144°39.941'E
MMSI 995031042	

Level 2
235 Rynie St,
Geelong, 3220
VICTORIA
Ph. 03 5225 3500
Fax. 03 5225 3599

Scale in metres

LEGEND

- SHIPPING CHANNEL
- VRCA PORT BOUNDARY

Date: 4/6/2012

Sounding Datum: Chart Datum

Checked: D. Abraham

Format: A4

Revision:

Drawn: P. Bazalicki
Mapping & GIS Services
paulmap@hotmail.net.au

**VICTORIAN REGIONAL
CHANNELS AUTHORITY
PORT OF GEELONG
VICTORIA
POINT RICHARDS CHANNEL
VIRTUAL AIS BEACONS**

Drawing No.: Point Richards Virtual Beacons 4A & 6A.dwg