

# VICTORIAN NOTICES TO MARINERS

The following Notice to Mariners is published for general information.

MELBOURNE, 6 December 2012

AUSTRALIA – VICTORIA

No. 179(T) - 2012

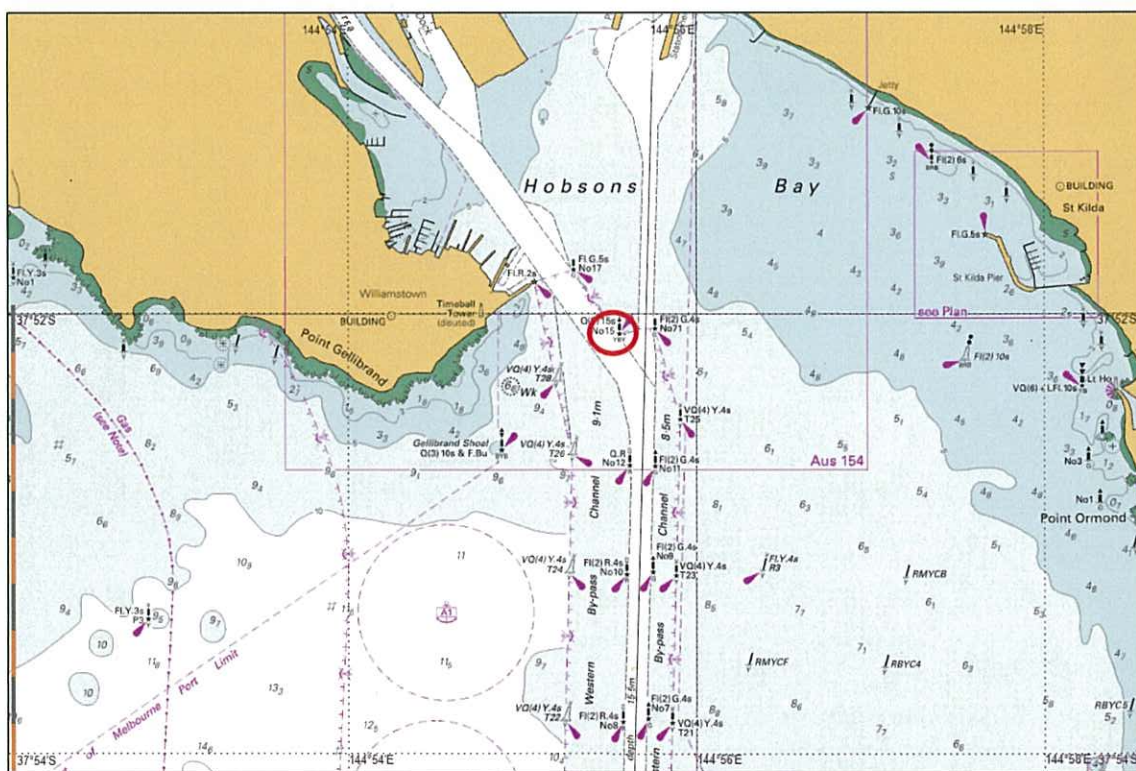
PORT OF MELBOURNE

PORT PHILLIP – PORT MELBOURNE CHANNEL –

DAMAGE TO No. 15 BEACON – TEMPORARY LIGHT ESTABLISHED

**Date:** 6 December 2012 until on or about 20 December 2012.

**Details:** Mariners are advised that Port Melbourne Channel No. 15 Beacon (K2338.4) located in position 37° 52.09' S 144° 55.56' E has been damaged causing the light and top mark to be out of commission.




A temporary cardinal light with the characteristics Q(9) 15s 4m has been installed and will remain in place whilst works are undertaken to repair the beacon.

Repair works are scheduled for completion on or about 20 December 2012

**Mariners are advised to navigate with caution in the vicinity of Port Melbourne Channel No 15 Beacon.**

**Charts affected:** AUS 154, AUS 155

**Further notice:** A further notice will be issued.

  
GARY WILSON  
HARBOUR MASTER