

# VICTORIAN NOTICES TO MARINERS

The following Notice to Mariners is published for general information.

MELBOURNE, 11 September 2013

AUSTRALIA – VICTORIA

No. 127(T) - 2013

PORT OF MELBOURNE

SOUTH CHANNEL – HOVELL PILE BELL-MOUTH – BEACON INSTALLATION WORKS

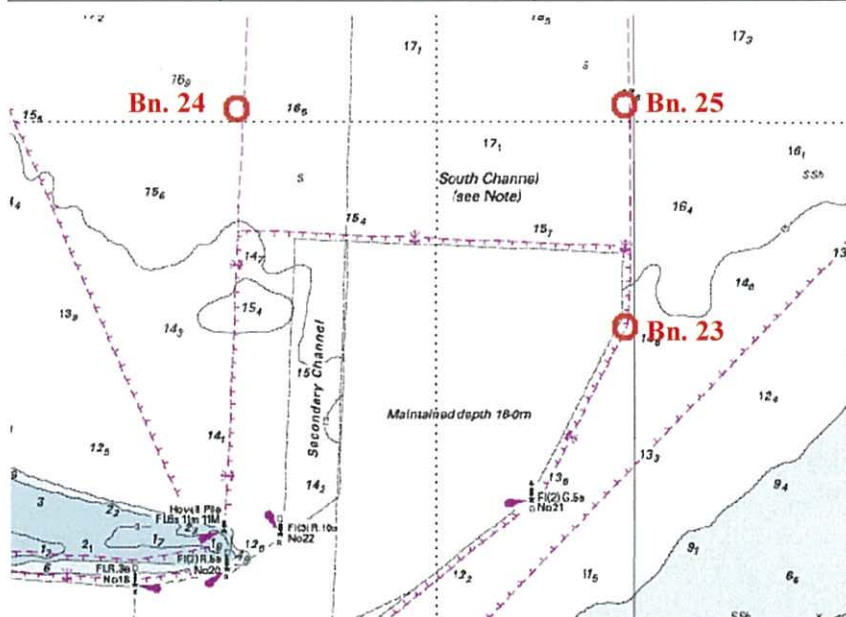
Date: 11 September 2013

Details: Mariners are advised that beacon installation works will be undertaken in the South Channel in the vicinity of Hovell Pile and are scheduled to commence, subject to weather conditions, on about the 12 September 2013.

The works, including piling and beacon fit outs, will require the use of the No. 147 Barge (55 m x 17 m x 3.6 m), the No. 162 Barge (18.5 m x 8 m x 2 m) and up to two (2) tugs as required.

Piling and new beacon fit-out works will occur in the vicinity of the following locations:

New Beacons	Latitude	Longitude
23	38°18.8071'	144°55.9472'
24	38° 17.9283'	144°53.9226'
25	38° 17.9283'	144° 55.9472'



Pile driving for each beacon will take approximately one day with permanent features, including top marks, day marks and lights, to be installed the following day. Beacon piles will be marked overnight with temporary flashing lights, as detailed below:

Beacon	Day Mark	Top Marks	Light Characteristics	
			Temporary	Permanent
23	Green	Δ on green beacon	Fl (3) G 10s	Fl (3) G 10s 5M
24	White and black		Fl (2) W 5s	Fl W 5s 11M
25	Green	Δ on green beacon	Fl (4) G 12s	Fl (4) G 12s 8M

All operations will be conducted during daytime hours with all plant returning to shore or a mooring at Capel Sound each evening. These works will not impact commercial shipping in the South Channel and are scheduled for completion on about 16 September 2013.


Further information can be obtained from Melbourne VTS on Channel 12.

**Mariners are advised to navigate with caution in the vicinity of the works.**

**Charts & Publications affected:**

AUS 143 and 158, Admiralty List of Lights and Fog Signals (Volume K).

**Further notice:** Further notice will be issued.



**GARY WILSON  
HARBOUR MASTER**