



# VICTORIAN NOTICE TO MARINERS 176 - 13

## Boat Ramp Construction Operations

Date: Commencing 20 December 2013 until further notice

Charts affected: **Aus 140 - Approaches to Portland (subchart 1) Portland**

Publication affected: Australian Pilot, Volume 2 (Twelfth edition 2013) pages 84 – 88

Buoyage system: IALA buoyage system – Region A

Details: **Temporary Exclusion Zone in Portland Harbour. Access to all waters within this area is prohibited except to authorised vessels.**

Mariners are advised that Porthaul Civil & Bellingham Marine will be carrying out various operations associated with the construction of a new boat ramp and pontoons in the vicinity of the north-west corner of Portland Harbour north of the Portland Bay Marina.

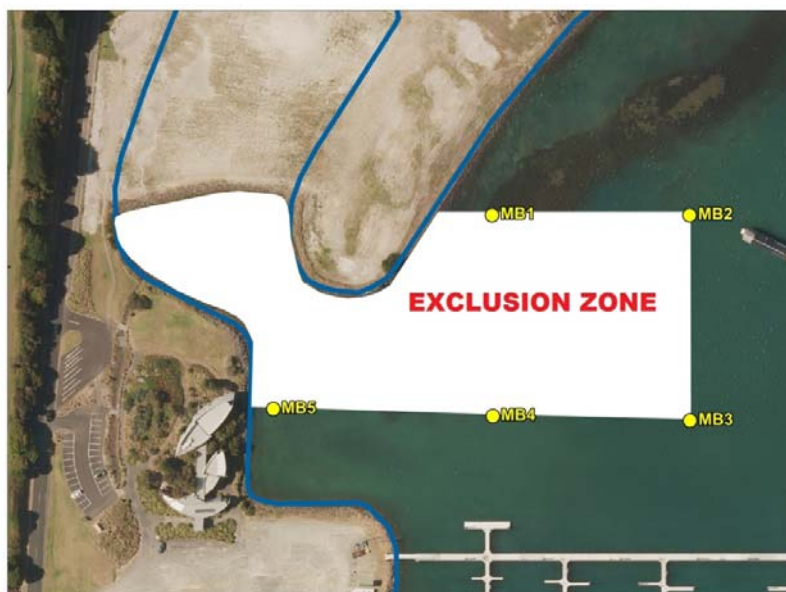
There will be various adjacent & on-water construction activities taking place including rock revetment, pile driving and installation of floating jetties. Vessels may be operating within the Exclusion Zone from Monday to Sunday in daylight hours.

If required, vessels/persons can contact the Project Manager, Belinda Ainley on 0428 336918

**Please refer to the diagram below for details.**

**Exclusion Zone (white area in the diagram below): NO ENTRY PERMITTED EXCEPT TO AUTHORISED VESSELS.**

An area bounded by Point MB1 in position 38°20'41.57"S, 141°36'33.00"E; Point MB2 in position 38°20'41.55"S, 141°36'36.62"E; Point MB3 in position 38°20'44.50"S, 141°36'36.65"E; Point MB4 in position 38°20'44.45"S, 141°36'33.06"E; & Point MB5 in position 38°20'44.35"S, 141°36'29.06"E. These points are marked by Yellow buoys.



### Further notice:

A further notice to advise stakeholders of the completion of work will be issued at a later date.

Any inquiries to: Local Port of Portland Bay Officers during business hours on 5522 2140

Issued by:  
Gary Bebbington  
Local Port of Portland Bay Manager  
Mobile: 0403 582 492  
E-mail:  
gbebbington@glenelg.vic.gov.au