



VICTORIAN NOTICE TO MARINERS

The following Notice to Mariners is published for general information

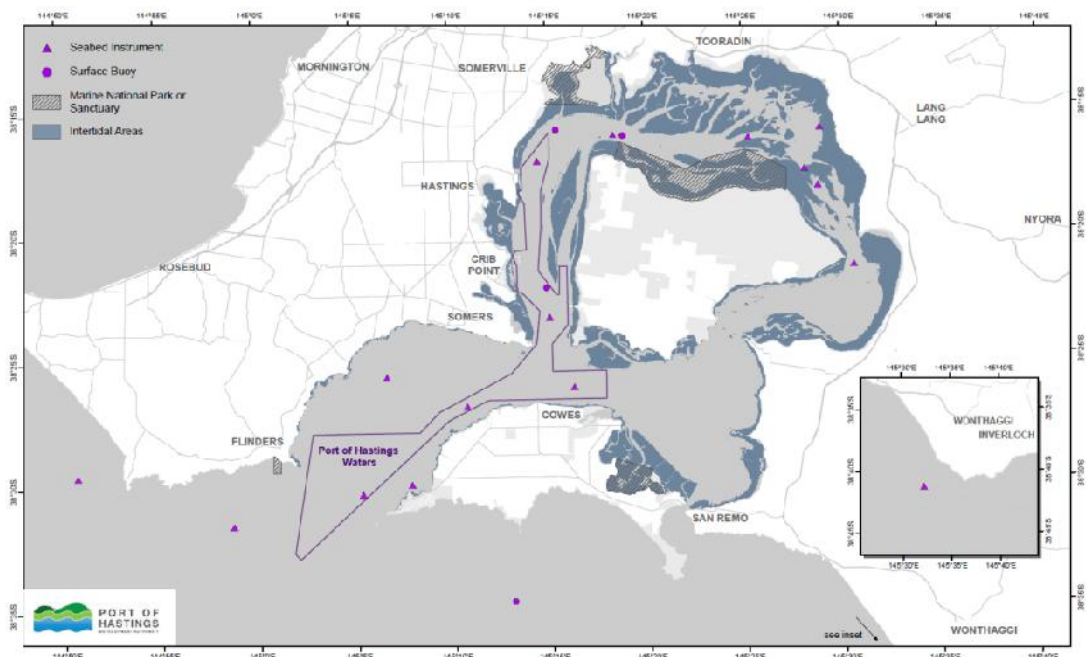
Port of Hastings 23rd October 2014

Marine Site Investigations - Western Port

NTM 184 (T) 2014

Details; Marine site investigations will be undertaken by the Port of Hastings Development Authority in and around Western Port for an initial period of 12 months. Timing of the investigations may be updated based on the results of the monitoring program. A map and a table showing the locations of marine instruments is included below. Various vessels will be used to deploy & service this equipment.

Further information can be found on the Port of Hastings Development Authority's website: www.portofhastings.com



Port of Hastings Development Authority - Marine Site Investigations
Proposed Insitu MetOcean and Water Quality Measurement Locations

21/10/2014

Site ID's	Target Co - Ordinates (Lat/Long)		Approx. Depth (cd - m)	Mounting Type
	Longitude	Latitude		
WPO 4	144.8460	-38.4926	40	Seabed
WPO 3	144.9782	-38.5269	42.5	Seabed
WPO 1	145.5367	-38.6877	40	Seabed
WE 2	145.1309	-38.5009	6.4	Seabed
WE 3	145.1110	-38.4288	6.5	Seabed
WE 4	145.1791	-38.4491	28.4	Seabed
R1	145.2709	-38.4369	17.2	Seabed
C2	145.5104	-38.3570	8.6	Seabed
C3	145.4809	-38.3038	2	Seabed with marker buoy
LNA 1	145.2507	-38.3902	22.2	Seabed
LNA 2	145.2483	-38.3703	12.7	Buoy
LNA 6	145.2580	-38.2647	9.5	Buoy
UNA 1	145.3150	-38.2692	22	Seabed and buoy
UNA 3	145.4218	-38.2714	6	Seabed
UNA 4	145.4828	-38.2652	1	Seabed with marker buoy
UNA 5	145.4695	-38.2927	2	Seabed with marker buoy
WER 1	145.0889	-38.5069	22.7	Seabed

Further Notice; This notice is self cancelling.



Capt Shane Vedamuttu.
Harbour Master – Western Port