

## VICTORIAN NOTICE TO MARINERS

The following Notice to Mariners is published for general information.

**GEELONG, 3 NOVEMBER 2014**

**AUSTRALIA – VICTORIA**

**NO. 190(T)-14**

### **TEMPORARY CHANGES TO POINT HENRY LEAD LIGHTS**

**Date:** 3 November 2014

**Details:** Due to the closure of the Point Henry Alcoa Plant, no vessels are expected to berth at Point Henry wharf in the immediate future. The following alterations to the existing lead lights have been made till further notice.

- 1) Reference No K 2270.70 Admiralty List of Lights (Vol K) the front lead light's day mark and blue neon (strip) light have been removed and replaced with a fixed all round blue light.
- 2) Reference No K 2270.71 Admiralty List of Lights (Vol K) the rear lead day mark and blue light on the wharf have been removed completely.
- 3) Reference No K 2270 Admiralty List of Lights (Vol K) the front lead blue light on the beacon south of the Point Henry wharf has been removed and replaced with a fixed all round blue light. The day mark remains.
- 4) Reference No K 2270.1 Admiralty List of Lights (Vol K) the rear blue lead light located on a shore post has been removed completely. The day mark remains.

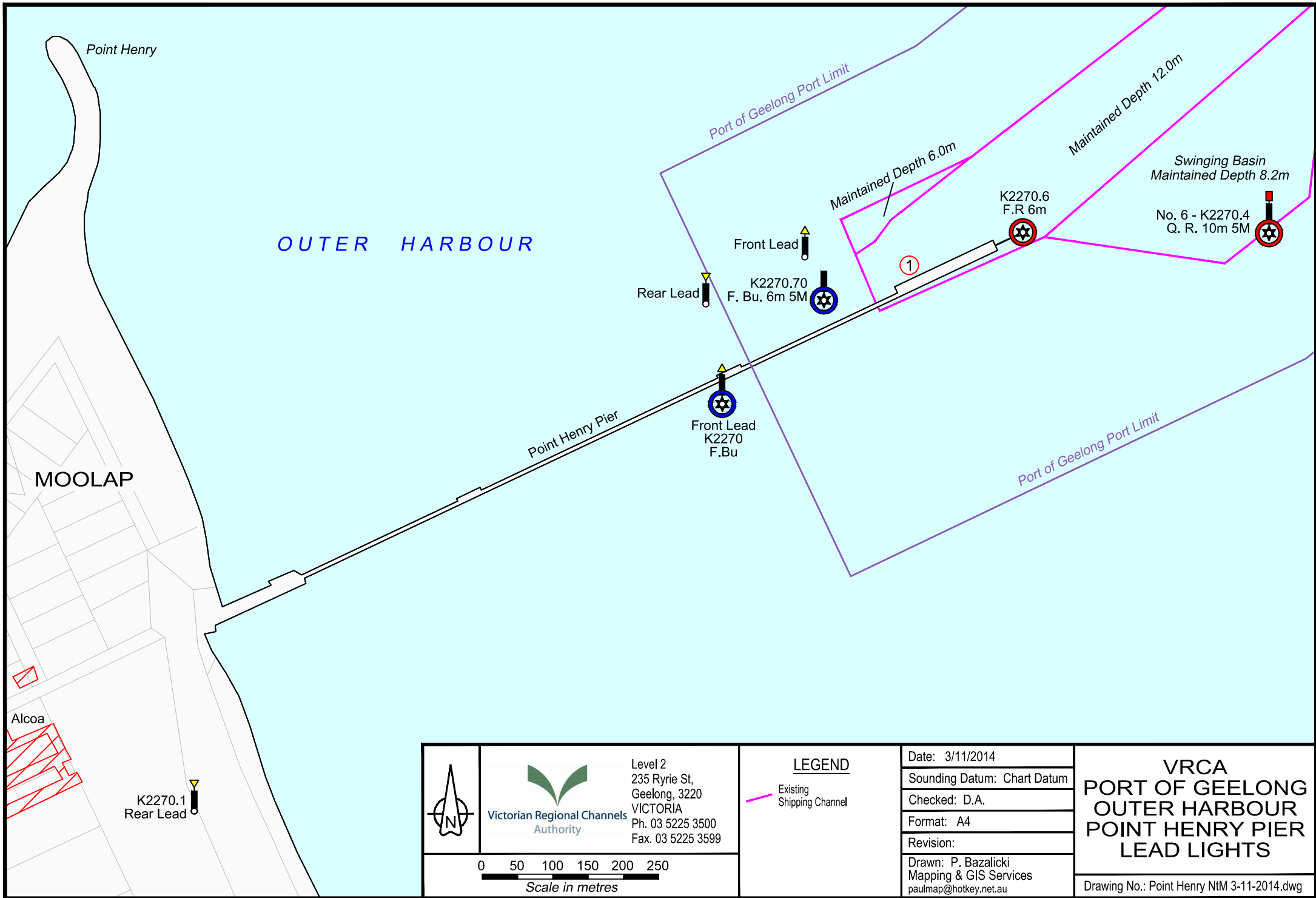
Recreational boaters are advised via this Notice and the attached diagram to take note of the changed circumstances with the lighting arrangements on the Point Henry lead lights. A good lookout should be kept at night and in reduced visibility when within the areas above and speeds should be commensurate with safe navigation to avoid accidents and personal injury.

**Charts &  
Publications**

**Affected:** Attached diagram, Aus157, Admiralty List of Lights Handbook Volume K.

**Further Notice:** Further Notice will be issued.

**CAPTAIN DILIP ABRAHAM  
HARBOUR MASTER  
PORT OF GEELONG**



OUTER HARBOUR

MOOLAP

Alcoa

K2270.1  
Rear Lead

Point Henry Pier

Front Lead  
K2270  
F.Bu

Rear Lead  
K2270.70  
F. Bu. 6m 5M

Front Lead

Port of Geelong Port Limit

Port of Geelong Port Limit




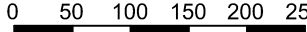
Maintained Depth 6.0m

Maintained Depth 12.0m

Swinging Basin  
Maintained Depth 8.2m

No. 6 - K2270.4  
Q. R. 10m 5M

K2270.6  
F.R 6m

	 <b>Victorian Regional Channels Authority</b>	Level 2 235 Ryrie St, Geelong, 3220 VICTORIA Ph. 03 5225 3500 Fax. 03 5225 3599	<b>LEGEND</b>		Date: 3/11/2014	<b>VRCA PORT OF GEELONG OUTER HARBOUR POINT HENRY PIER LEAD LIGHTS</b>
			 Existing Shipping Channel		Sounding Datum: Chart Datum	
 Scale in metres			Checked: D.A.	Format: A4		
			Revision:	Drawn: P. Bazalicki Mapping & GIS Services paulmap@hotmail.net.au		
					Drawing No.: Point Henry NIM 3-11-2014.dwg	