

VICTORIAN NOTICE TO MARINERS

The following Notice to Mariners is published for general information.

GEELONG, 5 December 2014

AUSTRALIA – VICTORIA

NO. 207(T)-14

PORT OF GEELONG

NOTICE OF BEACON REINSTALLATION WORKS - CHANNEL DREDGING PROGRAM

Date: Effective from 8 December 2014 to 15 December 2014 approximately.

Previous Notices NTM No 163(T)-2014

Details: The Channel Safety Dredging Program in Geelong is near completion and the next phase will commence on December 8, 2014 in the vicinity of the Corio Bay City Bend. This phase involves reinstalling four beacons which have been refurbished. The new positions of the beacons mark the wider City Bend (See attached chart).

The beacons which will be reinstalled are:

- No 11 (South Cardinal Mark) Hopetoun Channel
- No 13 (Starboard Hand Beacon) Hopetoun Channel
- No 1 (Starboard Hand Beacon) Corio Channel
- No 3 (Starboard Hand Beacon) Corio Channel

Four large 3 meter diameter steel buoys with top marks and lights, will remain on the present channel toe line. Crane Barge L147 (length 55 meters, breadth 17 meters) and tug, will work on reinstalling the beacons mentioned above and will have to drop anchors within the main channel during the process. The L147 will retrieve her anchors before ships pass the area and it is vital that communication with her be maintained at all times via VHF Channel 12. Barge L179 and tug will be present also to install the top structures of the reinstalled beacons. The Duty Marine Controller will check the working status of the barges before allowing ships to transit through the area. The works are expected to be conducted during daylight hours only and both barges and accompanying tugs will display appropriate signals as required by the International Collision Regulations. Masters of commercial ships using the channels of Geelong during the beacon reinstallation operations are advised to maintain a strong maritime awareness of the barges' activities. Actions like slowing down when passing (if requested) and communicating with the barges on VHF Channel 12 may need to be included into the vessel's passage plan prior to entering or departing from the port of Geelong.

The reinstalled beacons will be fitted with all-round 2nm yellow lights until the permanent lights are fitted and the buoys are removed.

The Duty Marine Controller may be contacted on VHF Channel 12 or on 03-52470300 at all times for information regarding the barges' latest position and activities. Non-commercial mariners and recreational craft are also reminded vide this Public Notice of their safety obligations and are requested not to navigate within a minimum distance of 200 meters of the barges and accompanying tugs at all times.

**Charts &
Publications**

Affected: Aus 153. See Attached diagram

Further Notice: Further Notices will be issued

**CAPTAIN PETER MCGOVERN
ASST HARBOUR MASTER
PORT OF GEELONG**

Victorian Notices to Mariners can be downloaded from the
Victorian Regional Channels Authority website www.regionalchannels.vic.gov.au

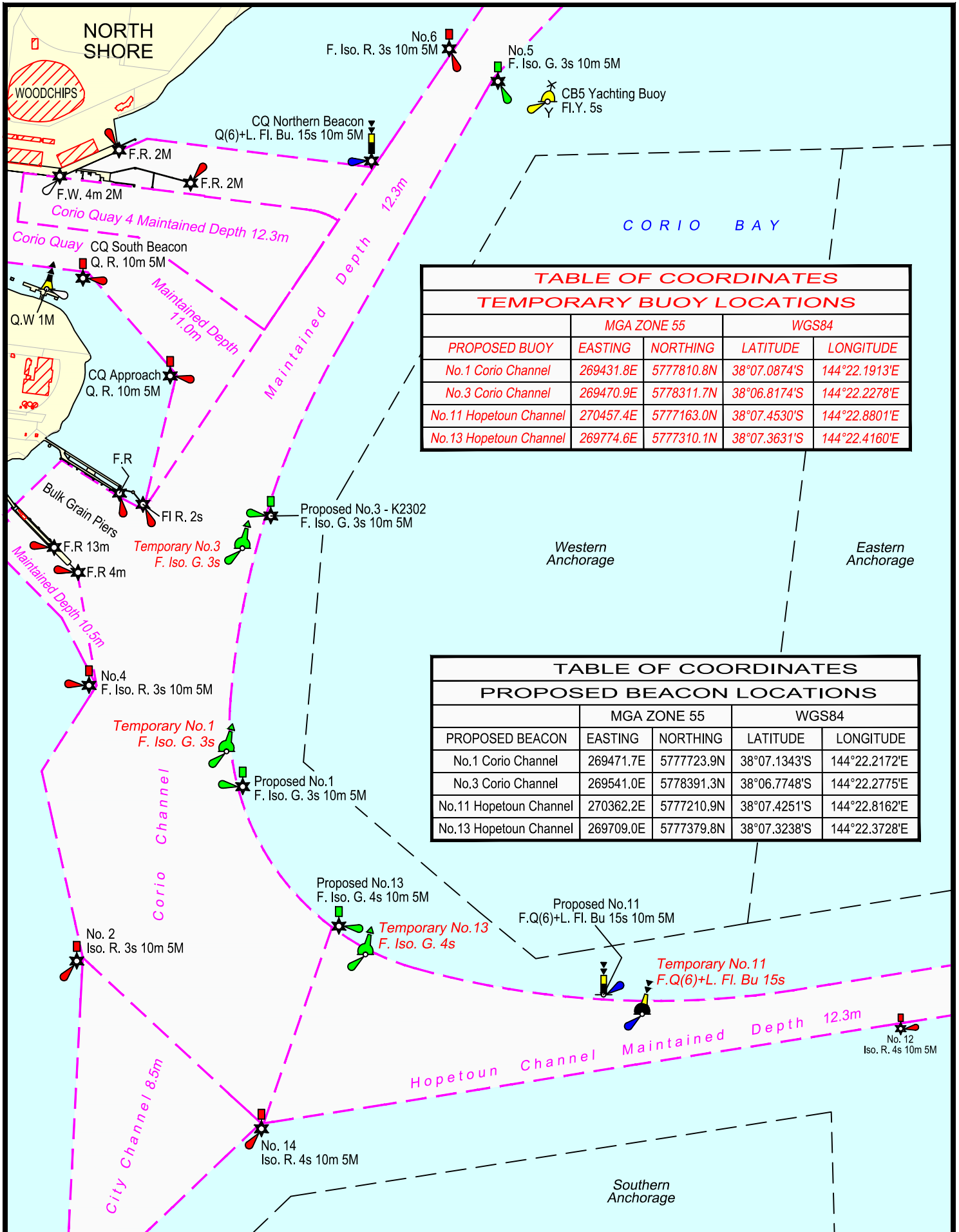


TABLE OF COORDINATES				
TEMPORARY BUOY LOCATIONS				
	MGA ZONE 55		WGS84	
PROPOSED BUOY	EASTING	NORTHING	LATITUDE	LONGITUDE
No.1 Corio Channel	269431.8E	5777810.8N	38°07.0874'S	144°22.1913'E
No.3 Corio Channel	269470.9E	5778311.7N	38°06.8174'S	144°22.2278'E
No.11 Hopetoun Channel	270457.4E	5777163.0N	38°07.4530'S	144°22.8801'E
No.13 Hopetoun Channel	269774.6E	5777310.1N	38°07.3631'S	144°22.4160'E

TABLE OF COORDINATES				
PROPOSED BEACON LOCATIONS				
	MGA ZONE 55		WGS84	
PROPOSED BEACON	EASTING	NORTHING	LATITUDE	LONGITUDE
No.1 Corio Channel	269471.7E	5777723.9N	38°07.1343'S	144°22.2172'E
No.3 Corio Channel	269541.0E	5778391.3N	38°06.7748'S	144°22.2775'E
No.11 Hopetoun Channel	270362.2E	5777210.9N	38°07.4251'S	144°22.8162'E
No.13 Hopetoun Channel	269709.0E	5777379.8N	38°07.3238'S	144°22.3728'E

Level 2
235 Ryrie St,
Geelong, 3220
VICTORIA
Ph. 03 5225 3500
Fax. 03 5225 3599

0 250 500 750

Scale in metres

LEGEND

--- Shipping Channel

Date: 4/12/2014
 Sounding Datum: Chart Datum
 Checked: P.M.
 Format: A4
 Revision:
 Drawn: P. Bazalicki
 Mapping & GIS Services
 paulmap@hotmail.net.au

VRCA
 CORIO BAY - CHANNEL
 SAFETY ADJUSTMENT PROGRAM
 PROPOSED BEACON RE-LOCATION
 CITY BEND

Drawing No.: City Bend Beacon Re-Location 2014.dwg