

VICTORIAN NOTICE TO MARINERS

The following Notice to Mariners is published for general information.

GEELONG, 17 December 2014

AUSTRALIA – VICTORIA

NO. 218(T)-14

PORT OF GEELONG

NOTICE OF BEACON REINSTALLATION WORKS - CHANNEL DREDGING PROGRAM

Date: Effective from 15 December 2014 to 22 December 2014 approximately.

Previous Notices NTM No 216(T)-2014

Details: The Channel Safety Dredging Program in Geelong is near completion. The reinstallation of the beacons, identified on the attachment, has been completed on Wednesday, December 17. Lights have been restored as per Aus 153

No 11 (South Cardinal Mark)	Hopetoun Channel
No 13 (Starboard Hand Beacon)	Hopetoun Channel
No 1 (Starboard Hand Beacon)	Corio Channel
No 3 (Starboard Hand Beacon)	Corio Channel

The four large 3 meter diameter steel buoys with top marks and lights, have been removed.

Tug Edi will be working in the vicinity of the beacons during this period.

Appropriate signals will be displayed.

The Duty Marine Controller may be contacted on VHF Channel 12 or on 03-52470300 at all times for information.

**Charts &
Publications**

Affected: Aus 153. See Attached diagram

**CAPTAIN PETER MCGOVERN
ASST HARBOUR MASTER
PORT OF GEELONG**

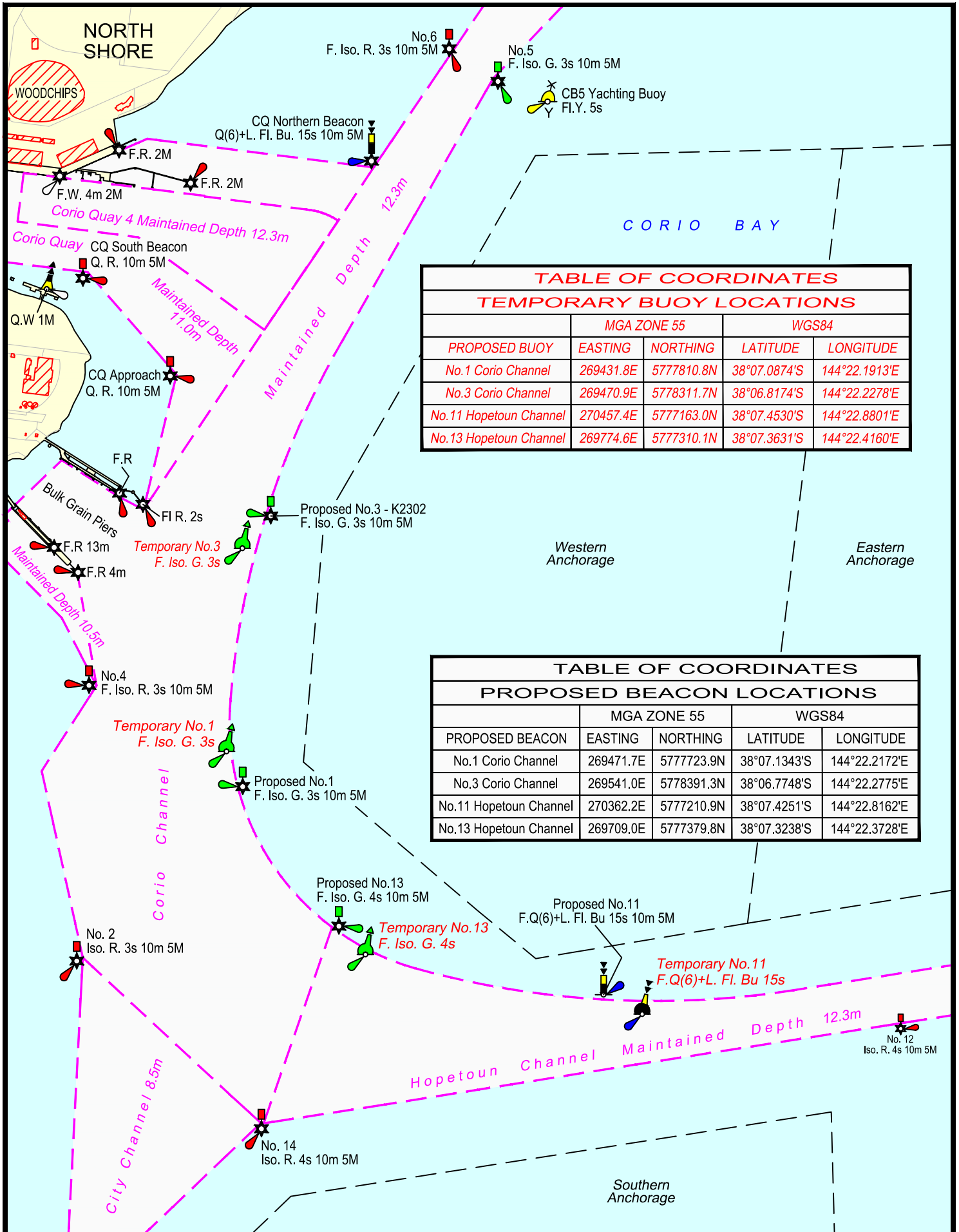


TABLE OF COORDINATES				
TEMPORARY BUOY LOCATIONS				
	MGA ZONE 55		WGS84	
PROPOSED BUOY	EASTING	NORTHING	LATITUDE	LONGITUDE
No.1 Corio Channel	269431.8E	5777810.8N	38°07.0874'S	144°22.1913'E
No.3 Corio Channel	269470.9E	5778311.7N	38°06.8174'S	144°22.2278'E
No.11 Hopetoun Channel	270457.4E	5777163.0N	38°07.4530'S	144°22.8801'E
No.13 Hopetoun Channel	269774.6E	5777310.1N	38°07.3631'S	144°22.4160'E

TABLE OF COORDINATES				
PROPOSED BEACON LOCATIONS				
	MGA ZONE 55		WGS84	
PROPOSED BEACON	EASTING	NORTHING	LATITUDE	LONGITUDE
No.1 Corio Channel	269471.7E	5777723.9N	38°07.1343'S	144°22.2172'E
No.3 Corio Channel	269541.0E	5778391.3N	38°06.7748'S	144°22.2775'E
No.11 Hopetoun Channel	270362.2E	5777210.9N	38°07.4251'S	144°22.8162'E
No.13 Hopetoun Channel	269709.0E	5777379.8N	38°07.3238'S	144°22.3728'E

Level 2
235 Ryrie St,
Geelong, 3220
VICTORIA
Ph. 03 5225 3500
Fax. 03 5225 3599

0 250 500 750

Scale in metres

LEGEND

--- Shipping Channel

Date: 4/12/2014
 Sounding Datum: Chart Datum
 Checked: P.M.
 Format: A4
 Revision:
 Drawn: P. Bazalicki
 Mapping & GIS Services
 paulmap@hotmail.net.au

VRCA
 CORIO BAY - CHANNEL
 SAFETY ADJUSTMENT PROGRAM
 PROPOSED BEACON RE-LOCATION
 CITY BEND

Drawing No.: City Bend Beacon Re-Location 2014.dwg