



VICTORIAN NOTICE TO MARINERS

The following Notice to Mariners is published for general information.

GEELONG, 18 DECEMBER, 2015

AUSTRALIA - VICTORIA

NO. 257 - 2015

PORT OF GEELONG

GEELONG OUTER ANCHORAGE AT POINT RICHARDS FOR DEEP DRAUGHT VESSELS

Date: With immediate effect

Previous Notices: NTM 065(T)-15 refers and is hereby cancelled.

Details: As a result of a Channels Strategy Plan for the optimum utilisation of areas within the limits of the port waters of Geelong, the Victorian Regional Channels Authority has trialled the use of an anchorage for deep draught vessels in the vicinity of and around the Point Richards Entrance beacon.

This area (to be known as Geelong Outer Anchorage) marked by the coordinates (see attached diagram) indicate the limits of the anchorage and Mariners are advised that deep draught vessels may anchor in this area if they wish.

Owners/ Ship Agents of deep draught vessels are hereby reminded vide this Notice that they will need to discuss Pilot embarkation/disembarkation procedures/costs directly with the Port Phillip Sea Pilots prior to using this anchorage due to increased distances from their Pilot Stations.

The trial period is over and the area will be permanently known as the Geelong Outer Anchorage. Due to its limited area deep draught vessels wishing to anchor there must obtain permission from the HM before planning to do so.

Charts & Publications Affected:

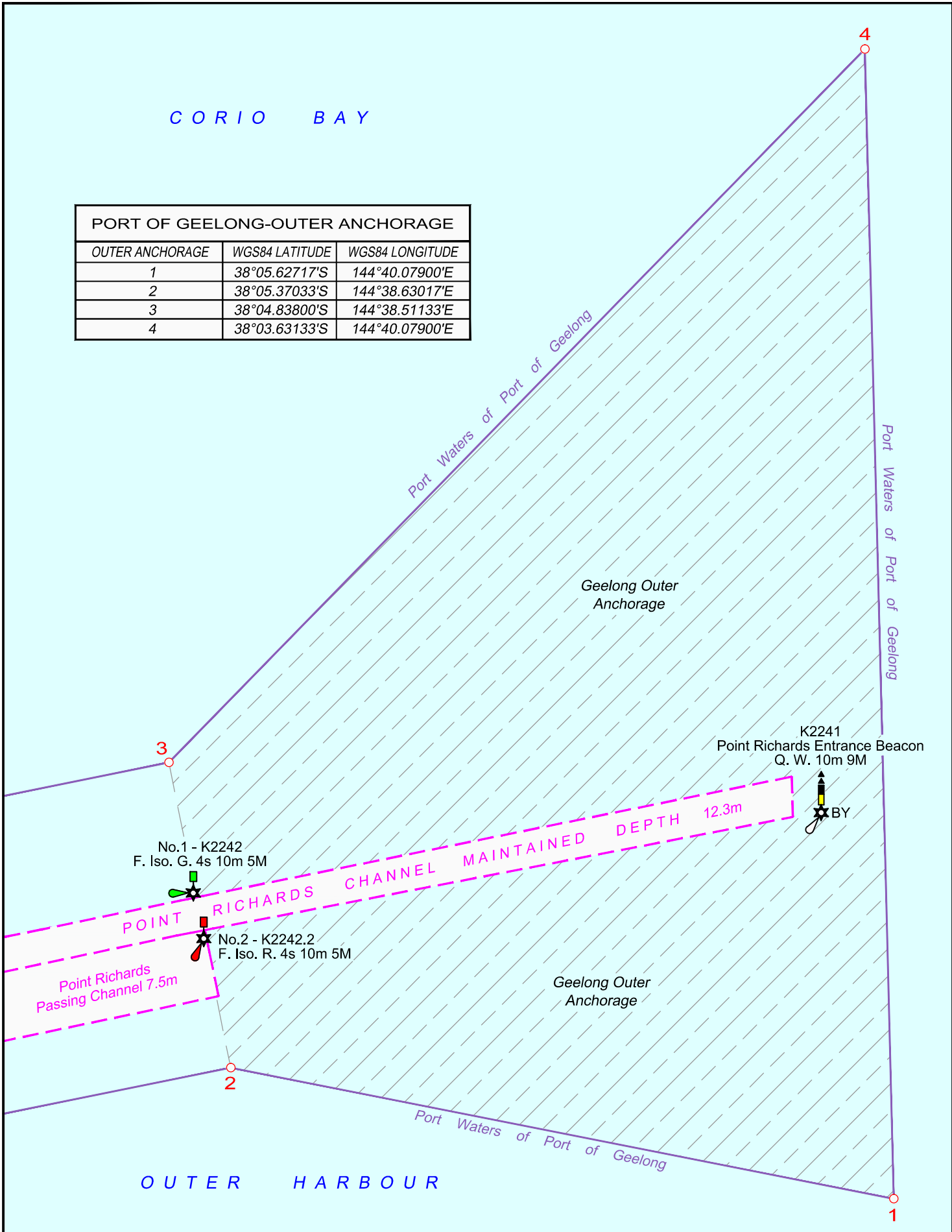
Aus 157

Further Notice: Will not be issued

**CAPTAIN DILIP ABRAHAM
HARBOUR MASTER
PORT OF GEELONG**

C O R I O B A Y

PORT OF GEELONG-OUTER ANCHORAGE		
OUTER ANCHORAGE	WGS84 LATITUDE	WGS84 LONGITUDE
1	38°05.62717'S	144°40.07900'E
2	38°05.37033'S	144°38.63017'E
3	38°04.83800'S	144°38.51133'E
4	38°03.63133'S	144°40.07900'E

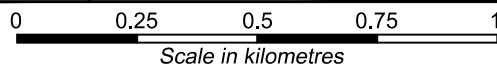


Victorian Regional Channels Authority

235 Ryrie St,
Geelong, 3220
VICTORIA
Ph. 03 5225 3500
Fax. 03 5225 3599

LEGEND

- Shipping Channel
- Geelong Outer Anchorage



Date: 16/3/2015
Horizontal Datum: WGS84
Checked: D.A.
Format: A4
Revision:

Drawn: P. Bazalicki
Mapping & GIS Services
paulmap@hotmail.net.au

**CORIO BAY
PORT OF GEELONG
POINT RICHARDS
GEELONG
OUTER ANCHORAGE**

Drawing No.: Outer Anchorage 3-2015.dwg