

VICTORIAN NOTICES TO MARINERS

The following Notice to Mariners is published for general information.

MELBOURNE, 28 October 2016

AUSTRALIA – VICTORIA

No. 303 (T) - 2016

PORT OF MELBOURNE

WEBB DOCK – COMMISSIONING OF NEW TRANSVERSE LEAD LIGHTS AIDS TO NAVIGATION LIGHT BEACONS 23, 82 AND 84 AND

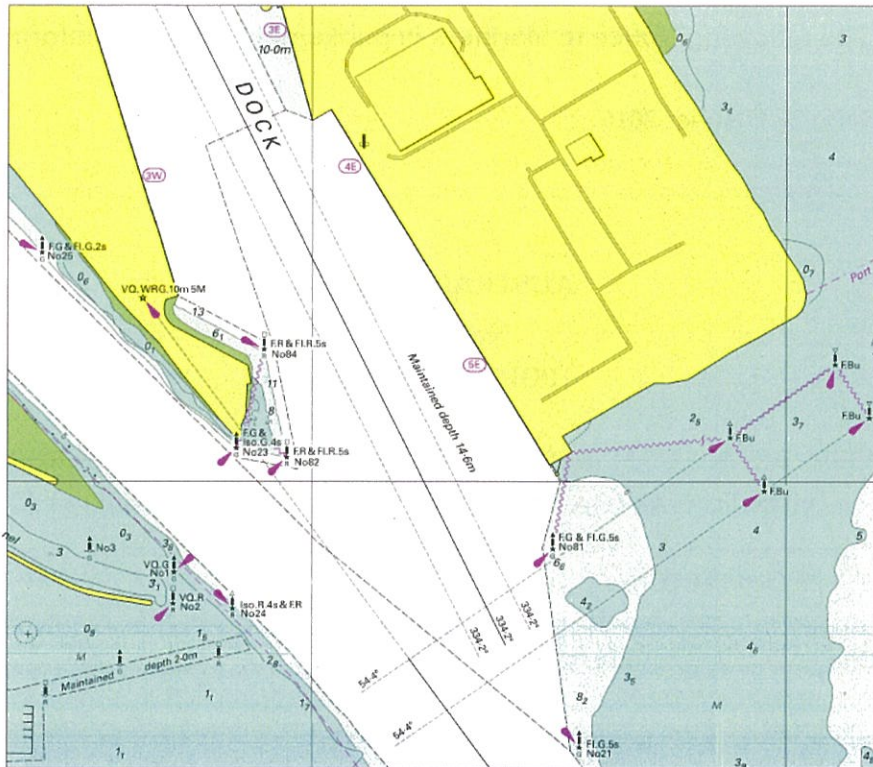
Date: 28 October 2016

Notice 134 (T) – 2015, 202 (T) – 2016 refers and is cancelled

Details: Mariners are advised that the new Webb Dock transverse lead lights and beacons 23, 82 and 84 will be commissioned during daylight hours on Friday 28 October 2016.
Consequently the Temporary Buoys 23 and 82 will be removed.

The two sets of transverse lead lights comprise of two front and two rear lead lights on a bearing of 54.4°.

Description	Latitude	Longitude	Characteristics
Front Transverse Lead Light	37° 50.962' S	144° 54.941' E	F.Bu
Rear Transverse Lead Light	37° 50.899' S	144° 55.052' E	F.Bu
Front Transverse Lead Light	37° 51.008' S	144° 54.997' E	F.Bu
Front Transverse Lead Light	37° 50.945' S	144° 55.088' E	F.Bu
Beacon 23	37° 50.971' S	144° 54.421' E	Iso G 4s F.G
Beacon 82	37° 50.979' S	144° 54.474' E	Fl R 5s F.R
Beacon 84	37° 50.886' S	144° 54.450' E	Fl R 5s F.R



Mariners are advised to be aware of changes in relation to the new Webb Dock Transverse Lead Lights and Aids to Navigation Light beacons 23, 82, and 84.

Charts & Publications Affected:

AUS 154 & Admiralty List of Lights and Fog Signals NP83 (Volume K).

Further notice: No Further notice will be issued.

**ROY STANBROOK
HARBOUR MASTER**

This notice is a direction of the Harbour Master pursuant to section 232 of the Marine Safety Act 2010. The requirements of section 232(2) have been taken into account.