

Melbourne, 02 November 2016

Australia – Victoria

No. 305 – 2016

PORT OF MELBOURNE

**WEBB DOCK – COMMISSIONING OF NEW TRANSVERSE LEAD LIGHTS
AIDS TO NAVIGATION LIGHT BEACONS 23, 82 AND 84.**

Date: 02 November 2016

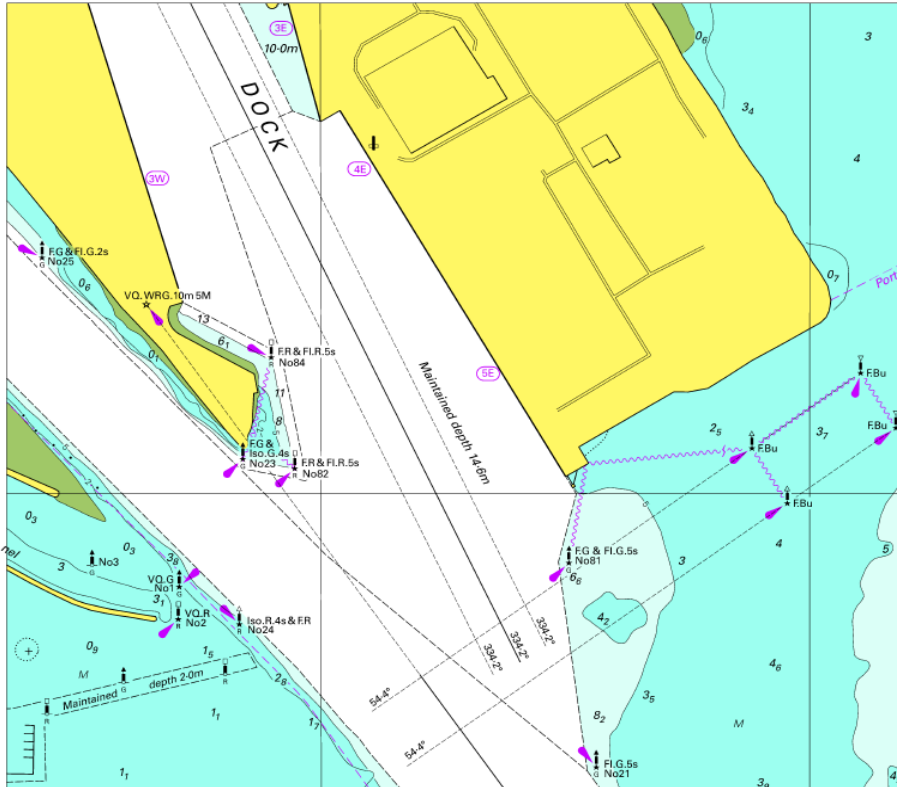
Refers: **Notice 303 (T) -2016 is cancelled**

Details: Mariners are advised that the new Webb Dock transverse lead lights and beacons 23, 82 and 84 have been commissioned.

Consequently the Temporary Buoys 23 and 82 have been removed.

The two sets of transverse lead lights comprise of two front and two rear lead lights on a bearing of 54.4°.

Description	Latitude	Longitude	Characteristics
Front Transverse Lead Light	37° 50.962' S	144° 54.941' E	F.Bu
Rear Transverse Lead Light	37° 50.899' S	144° 55.052' E	F.Bu
Front Transverse Lead Light	37° 51.008' S	144° 54.997' E	F.Bu
Front Transverse Lead Light	37° 50.945' S	144° 55.088' E	F.Bu
Beacon 23	37° 50.971' S	144° 54.421' E	Iso G 4s F.G
Beacon 82	37° 50.979' S	144° 54.474' E	Fl R 5s F.R
Beacon 84	37 °50.886' S	144° 54.450' E	Fl R 5s F.R



Mariners are advised to be aware of changes in relation to the new Webb Dock Transverse Lead Lights and Aids to Navigation Light beacons 23, 82, and 84.

Charts & Publications

affected: AUS 154 & Admiralty List of Lights and Fog Signals NP83 (Volume K)

Further notice: No Further Notice will be issued.

**Roy Stanbrook
Harbour Master**

This notice is a direction of the Harbour Master pursuant to section 232 of the *Marine Safety Act 2010* (Vic)
The requirements of section 232(2) have been taken into account.

Victorian Notices to Mariners can be downloaded from the Victorian Ports Corporation (Melbourne) website
www.vicports.vic.gov.au