

Melbourne, 05 January 2017

Australia – Victoria

No. 008 – 2017

PORT OF MELBOURNE

WEBB DOCK EAST & WEST – COMMISSIONING OF BERTHS 4 & 5 East

Date: 05 January 2017

Refers: 071(T) -2014, 024(T) – 2015,

Details: Mariners are advised that new berths are now in commission at Webb Dock East and West. Information concerning the new berths and towage requirements are detailed below. The changes will be reflected in the next revision of Harbour Master's Directions.

Berth		Maintained depth (m)	Ship's limits at berth (m)		Wharf height (m) above Chart Datum	General remarks
Name	Length (m)	Berth	Max. draught	Max. length		
<u>Webb Dock 1 West</u>	615	12.4	11.8	265	3.4	Ro-Ro car terminal berths
<u>Webb Dock 2 West</u>						Head Out Only. Max displacement 60,000 t
<u>Webb Dock 3 West</u>	Not yet in service					
<u>Webb Dock 4 East</u>	660	14.6	14.0	300 ⁴	3.05	Container terminal berths, Preferred head out Only
<u>Webb Dock 5 East</u>						Max displacement 118,000 t ⁴ Contact VPCM for LOA>300m and or beam >40.0m

This notice is a direction of the Harbour Master pursuant to section 232 of the *Marine Safety Act 2010* (Vic)
The requirements of section 232(2) have been taken into account.

Victorian Notices to Mariners can be downloaded from the Victorian Ports Corporation (Melbourne) website

www.vicports.vic.gov.au

The following are the towage requirements at Webb Dock East and West:

LOA (Vessel's length overall)	Tugs on arrival		Tugs on departure	
	Head In	Head Out	Head In	Head Out
Car carriers : All lengths – Webb Dock West 1 & 2				
<p>Tier 1 tugs to be used.</p> <p>All car carriers berth head out (bows south)</p> <p>Movements suspended when steady wind speed >20 kt (or gusts > 25 kt).</p> <p>When winds are forecast to be 30 kt (steady) or above from the southwest through to west, the provided storm bollards must be used or a tug will be mandated to standby the vessel for the expected duration of strong winds.</p> <p>¹ Clear Berth applies to 1 and 2 West Webb dock.</p> <p>Clear berth ahead able to count as 1 tug for Head Out departure if wind speeds < 15 kt.</p> <p>Thrusters and HPR to count as 1 tug as per notes to minimum towage table (see NTM 96/2016)</p>	n/a	2	n/a	2 ¹
Container Vessels : All Lengths – Webb Dock East 4 & 5				
<p>LOA 130 to <290m: movements suspended when Steady wind >30 kt or gusts >35 kt</p> <p>LOA >290 m to <295 m: Vessel's beam ≤34 m, movements suspended when steady wind >25 kt. (Tier 1 tugs only if wind exceeds 20 Kts)</p> <p>LOA >290 m to <295 m : Vessel's beam >34 m, movements suspended when steady wind >20 kt (Tier 1 tugs only).</p> <p>LOA ≥295 m to ≤300 m: movements suspended when Steady wind >20 kt. (Tier 1 tugs only).</p>	2	2	2	2

This notice is a direction of the Harbour Master pursuant to section 232 of the *Marine Safety Act 2010* (Vic)
The requirements of section 232(2) have been taken into account.

Victorian Notices to Mariners can be downloaded from the Victorian Ports Corporation (Melbourne) website
www.vicports.vic.gov.au

**Charts &
Publications**

affected: AUS 154

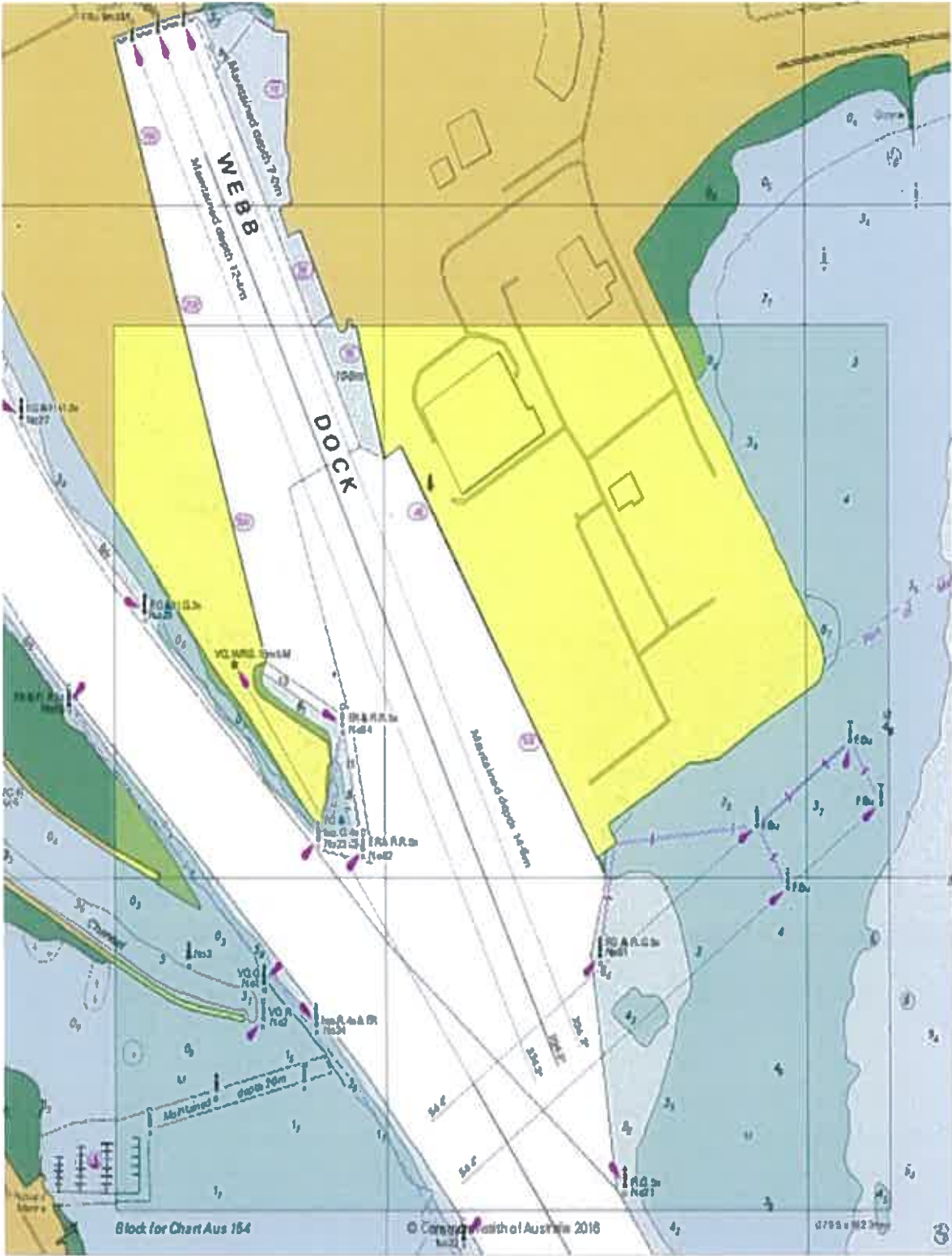
Further notice: No Further Notice will be issued.

A handwritten signature in blue ink, appearing to read 'R Stanbrook', is positioned above the printed name.

**Roy Stanbrook
Harbour Master**

This notice is a direction of the Harbour Master pursuant to section 232 of the *Marine Safety Act 2010* (Vic)
The requirements of section 232(2) have been taken into account.

Victorian Notices to Mariners can be downloaded from the Victorian Ports Corporation (Melbourne) website
www.vicports.vic.gov.au



Not for Navigation Use

This notice is a direction of the Harbour Master pursuant to section 232 of the *Marine Safety Act 2010 (Vic)*
The requirements of section 232(2) have been taken into account.

Victorian Notices to Mariners can be downloaded from the Victorian Ports Corporation (Melbourne) website
www.vicports.vic.gov.au