

Victorian Notice to Mariners

The following Notice to Mariners is published for general information.

AUSTRALIA – VICTORIA No. 041 (Temporary) of 2017 BASS STRAIT –Port Campbell to Peterborough

Date: FROM PUBLICATION OF THIS NOTICE

Details:

Mariners are advised of survey works being undertaken by Origin Energy.

The survey operations are due to commence on 3 February 2017 and continue to 1 April 2017.

The survey is in Victorian State waters commencing at a point 6 km east of Port Campbell to a point 4 km west of Peterborough and extending 5.5 km off shore.

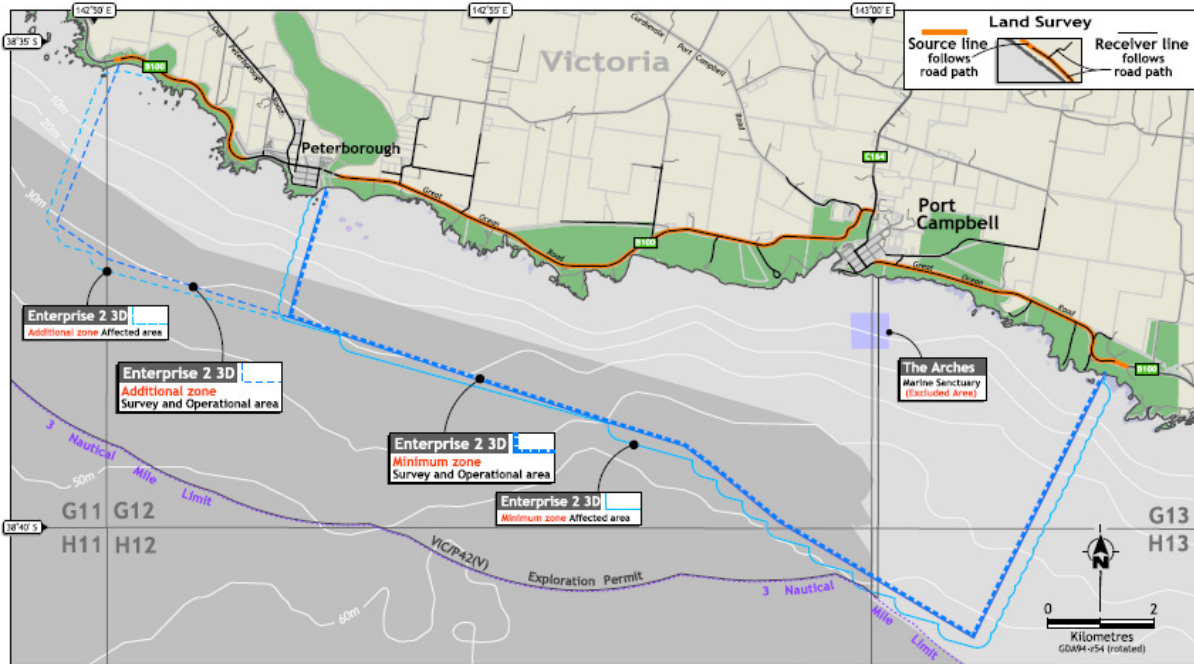
The vessels involved in the survey: MV Blackjack (Call sign VNW5712), MV Prowler (Call sign VJN 4229), MV Business Class VHW4699) will be displaying the lights and shapes required by the Collision Regulations for a vessel “restricted in her ability to manoeuvre.”

Vessels involved in the survey will maintain a listening watch on VHF Channel 16.

Masters of vessels are advised to navigate with caution and to keep clear of the vessels undertaking the survey and vessels engaged in support operations within the area detailed in **Table 1**.

Table 1

Latitude	Longitude
38 ⁰ 36.01' S	142 ⁰ 52.01' E
38 ⁰ 38.02' S	142 ⁰ 52.05' E
38 ⁰ 40.94' S	143 ⁰ 01.13' E
38 ⁰ 37.88' S	143 ⁰ 02.35' E



AUS Charts and publications affected:
 AUS 787, AUS 141, AUS 349

Victorian Charts and publications affected:
 Nil

Further notice:
 A Notice will be issued at the completion of the works.

For further information; www.originenergy.com.au/enterprise2

Peter Corcoran
Director, Maritime Safety Victoria
 Dated 2 February 2017