

Victorian Notice to Mariners

The following Notice to Mariners is published for general information.

AUSTRALIA – VICTORIA No. 097 (Temporary) of 2017 BASS STRAIT –Port Campbell to Peterborough

Date: FROM PUBLICATION OF THIS NOTICE

Details:

Mariners are advised of diving activities associated with survey works being undertaken by Origin Energy.

The diving operations are due to conclude on 30 March 2017.

The diving operations and survey are in Victorian State waters commencing at a point 6 km east of Port Campbell to a point 4 km west of Peterborough and extending 5.5 km off shore.

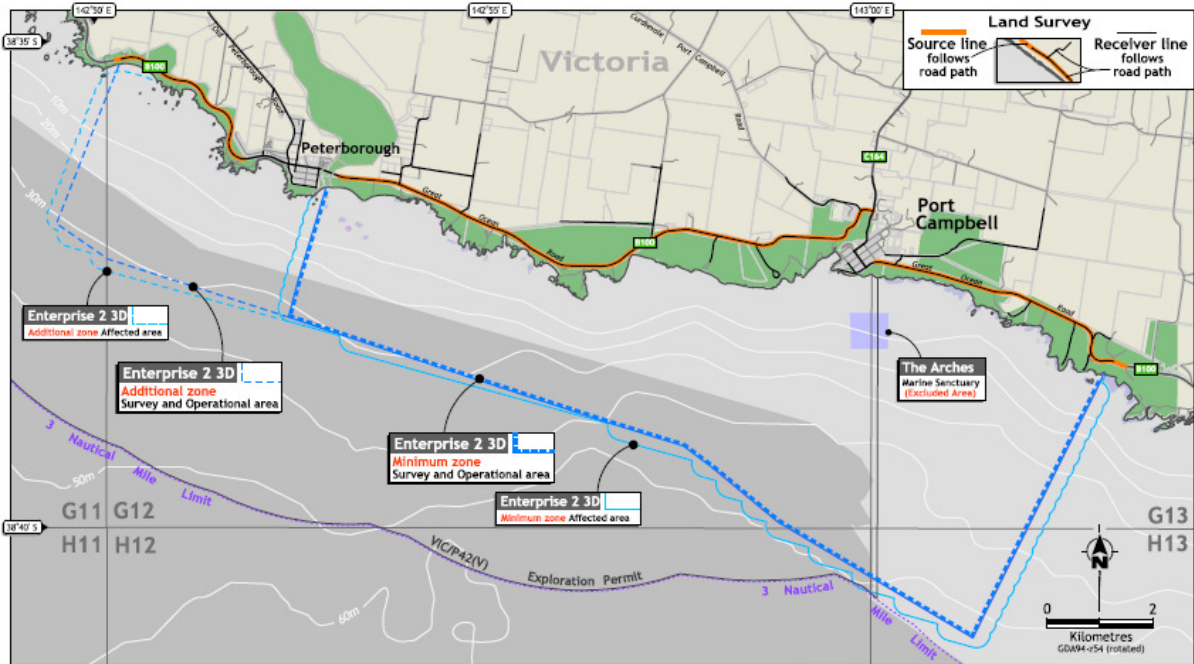
The vessel involved in diving operations, Pacific Crest : will be displaying the lights and shapes required by the Collision Regulations for a vessel “restricted in her ability to manoeuvre” and engaged in diving activities.

Vessels involved in the diving operations and survey will maintain a listening watch on VHF Channel 16.

Masters of vessels are advised to navigate with caution and requested to keep 300 metres clear of vessels engaged in diving operations within the area detailed in **Table 1**.

Table 1

Latitude	Longitude
38 ⁰ 36.01' S	142 ⁰ 52.01' E
38 ⁰ 38.02' S	142 ⁰ 52.05' E
38 ⁰ 40.94' S	143 ⁰ 01.13' E
38 ⁰ 37.88' S	143 ⁰ 02.35' E



AUS Charts and publications affected:

AUS 787, AUS 141, AUS 349

Victorian Charts and publications affected:

Nil

Further notice:

No further Notice will be issued.

For further information; www.originenergy.com.au/enterprise2

**Cameron Toy
Manager Waterway Safety and Compliance**

Dated 15 March 2017