

Melbourne, 09 May 2017

Australia – Victoria

No. 143 (T) – 2017

PORT MELBOURNE

WEBB DOCK TRANSVERSE LEADS

YELLOW SPECIAL MARKER BUOYS MARK NO ANCHORING AREA

Date: 09 May 2017

Refers: N/A

Details: Mariners are advised that 5 yellow special marker buoys will be established, to mark the no anchoring area around Webb Dock transverse leads on Wednesday 10 May 2017.

Each special marker buoy will be fitted with a yellow light flashing every 5 seconds (Fl.Y.5s). Please see photo below. The special marker buoys will be established in the following positions (please see chartlet below);

Mark	Latitude	Longitude	Light Characteristic
Yellow Special Marker Buoy	37 ° 50.898 ' S	144 ° 55.075 ' E	Fl.Y.5s
Yellow Special Marker Buoy	37 ° 50.949 ' S	144 ° 55.116 ' E	Fl.Y.5s
Yellow Special Marker Buoy	37 ° 50.990 ' S	144 ° 55.043 ' E	Fl.Y.5s
Yellow Special Marker Buoy	37 ° 51.031 ' S	144 ° 54.971 ' E	Fl.Y.5s
Yellow Special Marker Buoy	37 ° 51.012 ' S	144 ° 54.866 ' E	Fl.Y.5s

This notice is a direction of the Harbour Master pursuant to section 232 of the *Marine Safety Act 2010* (Vic). The requirements of section 232(2) have been taken into account.

Victorian Notices to Mariners can be downloaded from the Victorian Ports Corporation (Melbourne) website www.vicports.vic.gov.au

For more details please contact Melbourne VTS on 96449700 or on VHF Channel 12.

Mariners are advised to exercise caution when navigating in the vicinity of the above operations.

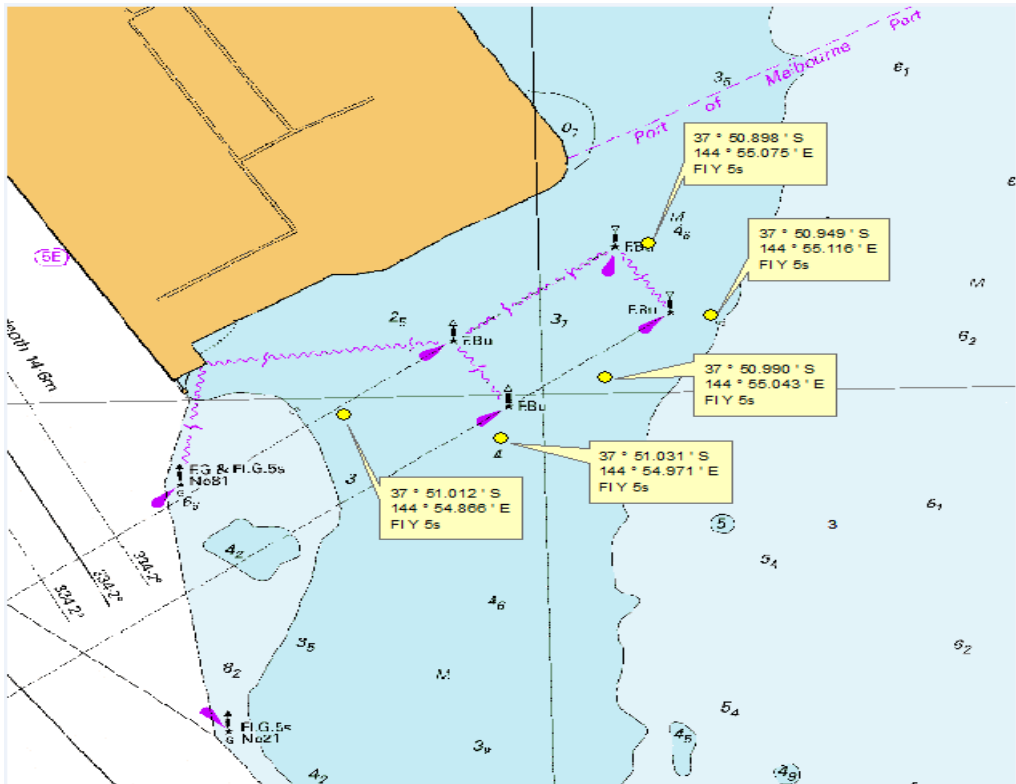
**Charts &
Publications**

affected: AUS 154

Further notice: Further Notice will be issued.



**Andrew Hays
Deputy Harbour Master**



NOT FOR NAVIGATION



TYPE OF BUOYS TO BE INSTALLED

This notice is a direction of the Harbour Master pursuant to section 232 of the *Marine Safety Act 2010* (Vic). The requirements of section 232(2) have been taken into account.

Victorian Notices to Mariners can be downloaded from the Victorian Ports Corporation (Melbourne) website www.vicports.vic.gov.au