

Melbourne, 12 May 2017

Australia – Victoria

No. 146 – 2017

PORT MELBOURNE

WEBB DOCK TRANSVERSE LEADS

YELLOW SPECIAL MARKER BUOYS MARKING NO ANCHORING AREA

ESTABLISHED

Date: 12 May 2017

Refers: **NTM 143 (T) refers and is cancelled**

Details: Mariners are advised that 5 yellow special marker buoys have been established in positions below, and all restrictions have been lifted.

Mark	Latitude	Longitude	Light Characteristic
Yellow Special Marker Buoy	37 ° 50.898 ' S	144 ° 55.075 ' E	Fl.Y.5s
Yellow Special Marker Buoy	37 ° 50.949 ' S	144 ° 55.116 ' E	Fl.Y.5s
Yellow Special Marker Buoy	37 ° 50.990 ' S	144 ° 55.043 ' E	Fl.Y.5s
Yellow Special Marker Buoy	37 ° 51.031 ' S	144 ° 54.971 ' E	Fl.Y.5s
Yellow Special Marker Buoy	37 ° 51.012 ' S	144 ° 54.866 ' E	Fl.Y.5s

For more details please contact Melbourne VTS on 96449700 or on VHF Channel 12.

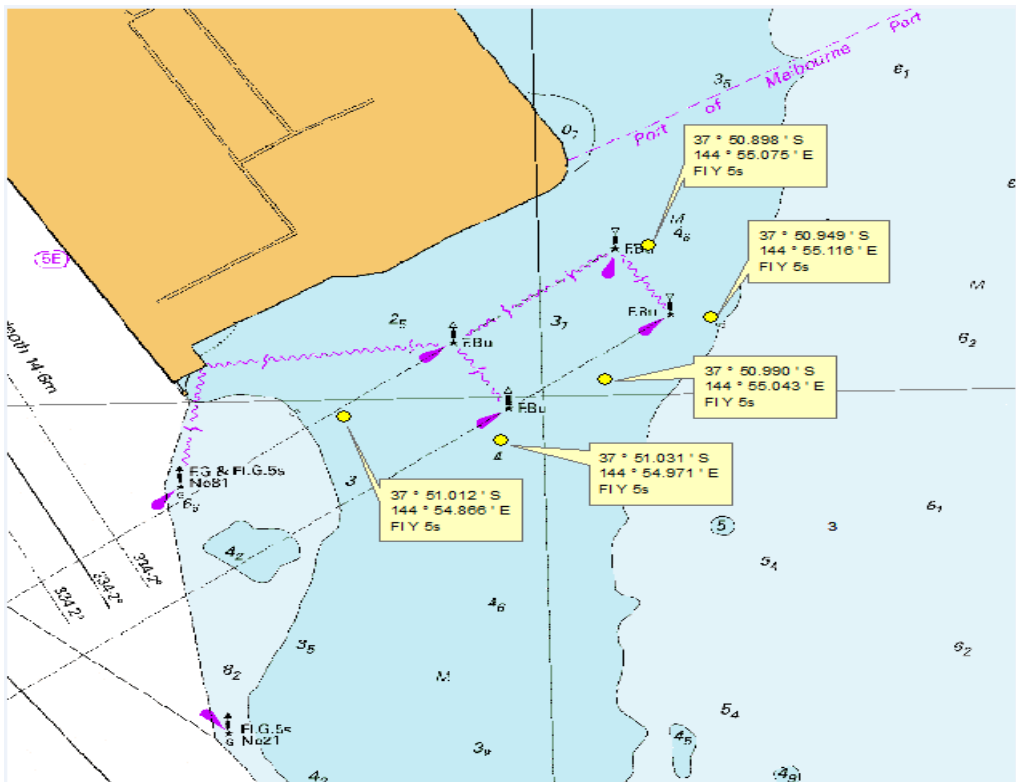
Charts &

Publications

affected: AUS 154

Further notice: No further Notice will be issued.

**Andrew Hays
Deputy Harbour Master**



NOT FOR NAVIGATION

This notice is a direction of the Harbour Master pursuant to section 232 of the *Marine Safety Act 2010* (Vic). The requirements of section 232(2) have been taken into account.

Victorian Notices to Mariners can be downloaded from the Victorian Ports Corporation (Melbourne) website www.vicports.vic.gov.au



This notice is a direction of the Harbour Master pursuant to section 232 of the *Marine Safety Act 2010* (Vic)
The requirements of section 232(2) have been taken into account.

Victorian Notices to Mariners can be downloaded from the Victorian Ports Corporation (Melbourne) website
www.vicports.vic.gov.au