

Tuesday, 06 June 2017

Australia – Victoria

No. 161 – 2017

PORT OF MELBOURNE

THREE WEBB DOCK WEST OPERATIONAL

Date: 06 June 2017

Refers: 008/2017

Details: Port users are advised that berth 3 Webb Dock West will be operational from the Wednesday 7 June 2017. [Harbour Master's Directions](#) Table 2(o) Berth Dimensions & Associated Ship Limits is amended as follows;

Berth		Maintained depth (m)	Ship's limits at berth (m)		Wharf height (m) above Chart Datum	General remarks
Name	Length (m)		Max. draught	Max. length		
Webb Dock 1 West	890	12.4	11.8	265	3.4	Ro-Ro car terminal berths Head Out Only. Max displacement 60,000 t
Webb Dock 2 West						
Webb Dock 3 West						

Towage requirements for 3 Webb Dock West are detailed in Notice to Mariners 008/2017, please note that clear berth does not apply to 3 Webb Dock West.

This notice is a direction of the Harbour Master pursuant to section 232 of the *Marine Safety Act 2010* (Vic)
The requirements of section 232(2) have been taken into account.

**Charts &
Publications**

affected: Harbour Masters Directions August 2015 Edition.

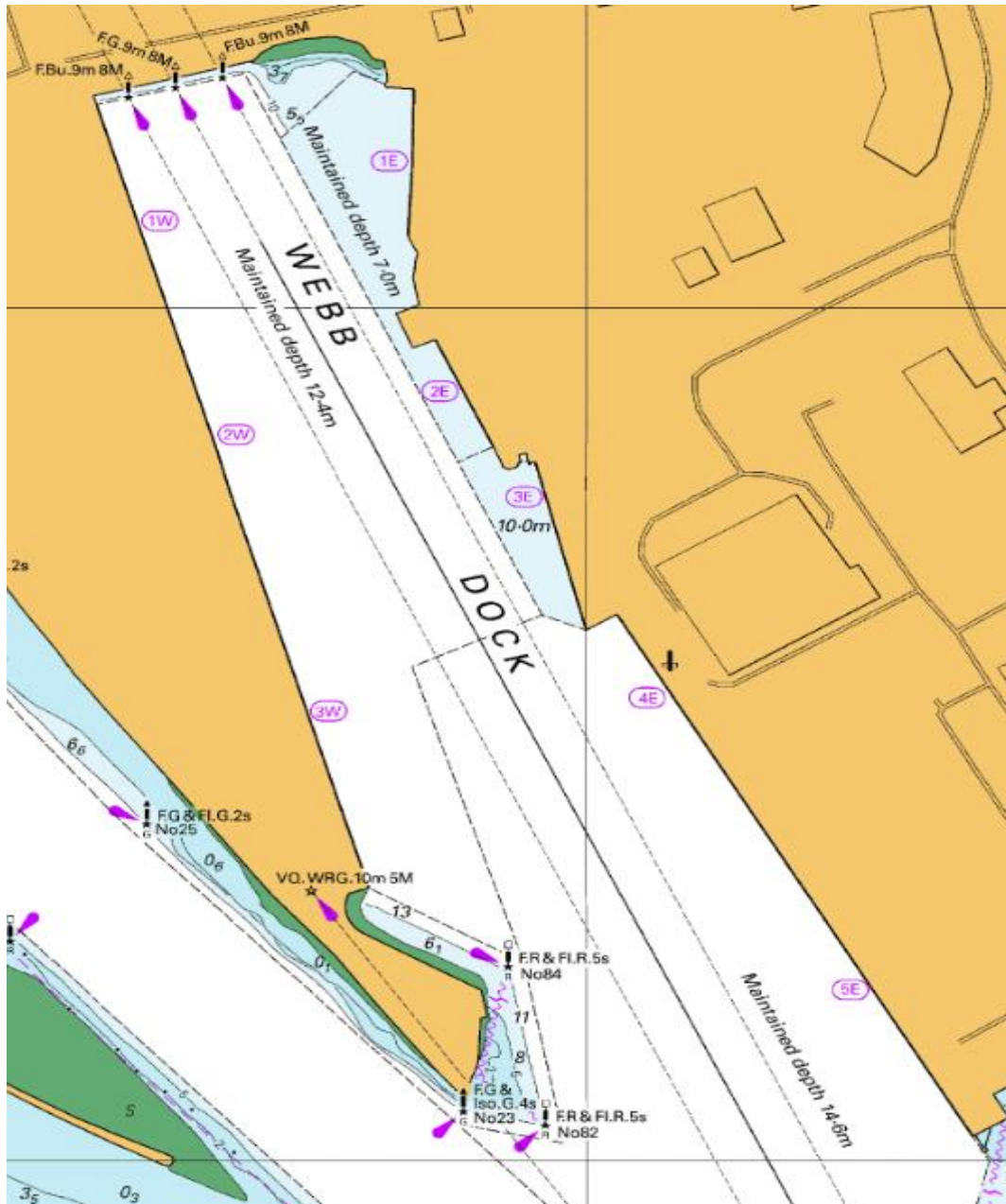
Further notice: No further notice will be issued.

A handwritten signature in blue ink, appearing to read 'Andrew Hays'.

**Andrew Hays
Deputy Harbour Master**

This notice is a direction of the Harbour Master pursuant to section 232 of the *Marine Safety Act 2010* (Vic)
The requirements of section 232(2) have been taken into account.

Victorian Notices to Mariners can be downloaded from the Victorian Ports Corporation (Melbourne) website
www.vicports.vic.gov.au



NOT FOR NAVIGATION

This notice is a direction of the Harbour Master pursuant to section 232 of the *Marine Safety Act 2010* (Vic)
 The requirements of section 232(2) have been taken into account.

Victorian Notices to Mariners can be downloaded from the Victorian Ports Corporation (Melbourne) website
www.vicports.vic.gov.au