

Melbourne, 04 July 2017

Australia – Victoria  
No. 183 (T) – 2017  
**PORT OF MELBOURNE – Yarraville 6  
TEMPORARY BERTH CLOSURE**

**Date:** 04 July 2017

**Refers:** N/A

**Details:** Port users are advised that rehabilitation works at Yarraville 6 are scheduled from 0600 hrs on 25 July 2017 till 1800 hrs on 04 August 2017 resulting in a temporary closure of the berth during this period.

Works will involve the demolition of a section of the wharf from 0 m to 30 m chainage.

Works will be carried out primarily using land based equipment, small work boats and divers will also be assisting on occasions. A floating containment boom will be deployed around the demolition area. Works will be conducted during daylight hours.

For more information, please contact Melbourne VTS on 9644 9700 or VHF Channel 12.

**Mariners are advised to navigate with caution in the vicinity of 5 & 6 Yarraville during the period of works, and not approach within 25 m of the demolition work area.**

**Charts affected:** AUS 154

**Further notice:** Further notice to be issued.

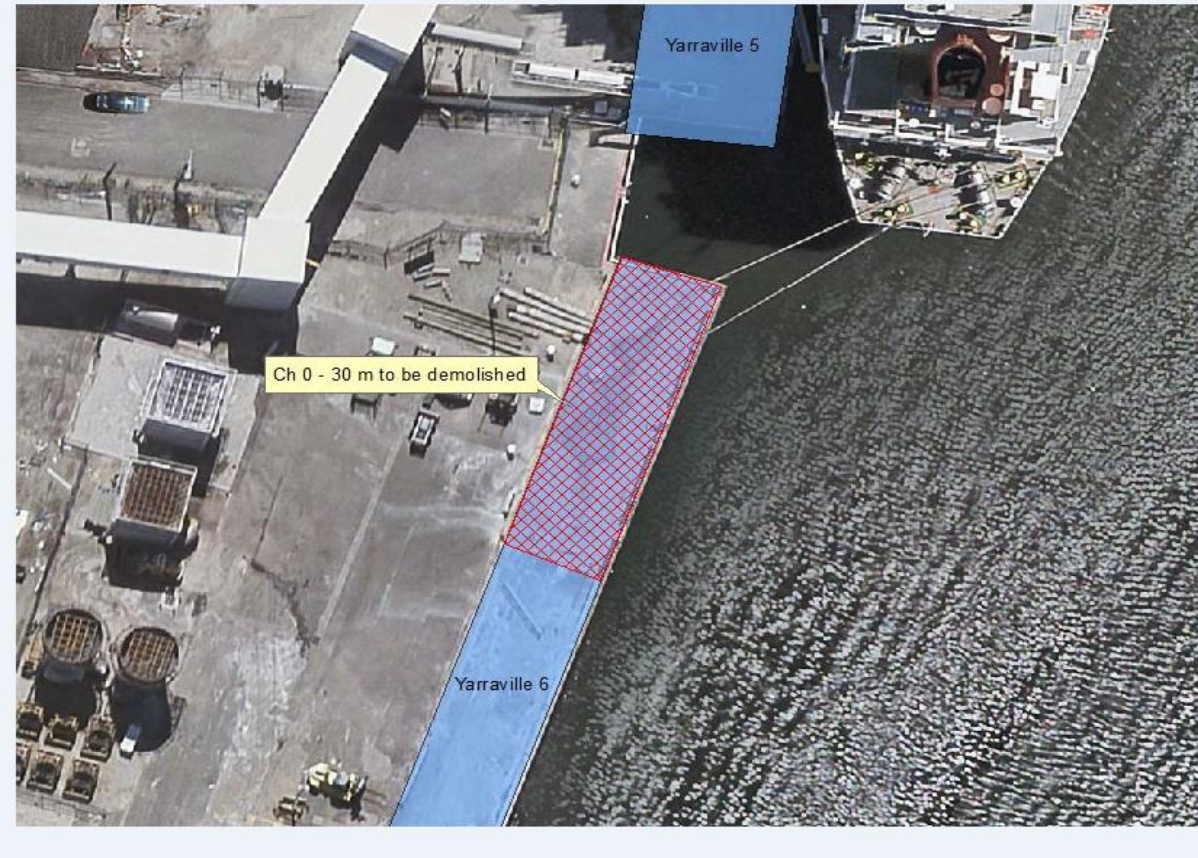


**Andrew Hays**

**Deputy Harbour Master**

This notice is a direction of the Harbour Master pursuant to section 232 of the *Marine Safety Act 2010* (Vic)  
The requirements of section 232(2) have been taken into account.

Victorian Notices to Mariners can be downloaded from the Victorian Ports Corporation (Melbourne) website  
[www.vicports.vic.gov.au](http://www.vicports.vic.gov.au)



This notice is a direction of the Harbour Master pursuant to section 232 of the *Marine Safety Act 2010* (Vic)  
The requirements of section 232(2) have been taken into account.

Victorian Notices to Mariners can be downloaded from the Victorian Ports Corporation (Melbourne) website  
[www.vicports.vic.gov.au](http://www.vicports.vic.gov.au)