

Melbourne, 21 July 2017

**Australia – Victoria**  
**No. 193 (T)– 2017**  
**PORT OF MELBOURNE**  
**INVASIVE MARINE PEST SURVEYS**

**Date:** 21 July 2017

**Refers:** NA

**Details:** Port users are advised that a series of invasive marine pest surveys will be conducted from Monday 24 July until approximately Wednesday 02 August during daylight hours, in the following locations;

- Yarra River between the Westgate Bridge and Bolte Bridge
- Webb Dock
- Williamstown
- Station Pier

For more detailed information on the sample sites see the chartlets below. The surveys are the initial part of a campaign that will be conducted over a period of 12 months.

The survey will be conducted from the workboat swell (see picture below) and will include visual diver inspection, trap deployments, benthic sediment dredge survey and plankton tows. The plankton tows and benthic sediment dredge surveys will take between 15 and 25 minutes at each sample collection site. Works will be conducted around shipping.

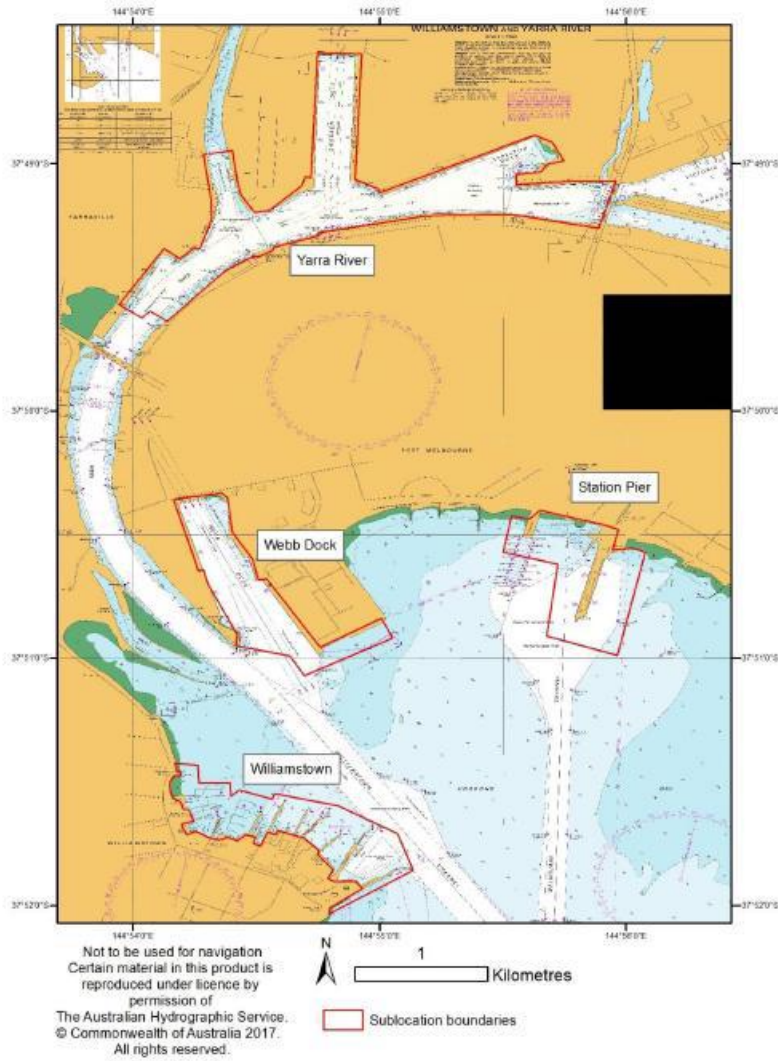
The point of contact for the works is the Field Supervisor contactable on VHF Channel 12 and 0459 826 420.

For more information, please contact Melbourne VTS on 9644 9700 on VHF Channel 12.

**Mariners are advised to navigate with caution in the vicinity during the period of works.**

**Charts &  
Publications  
affected:** AUS 154

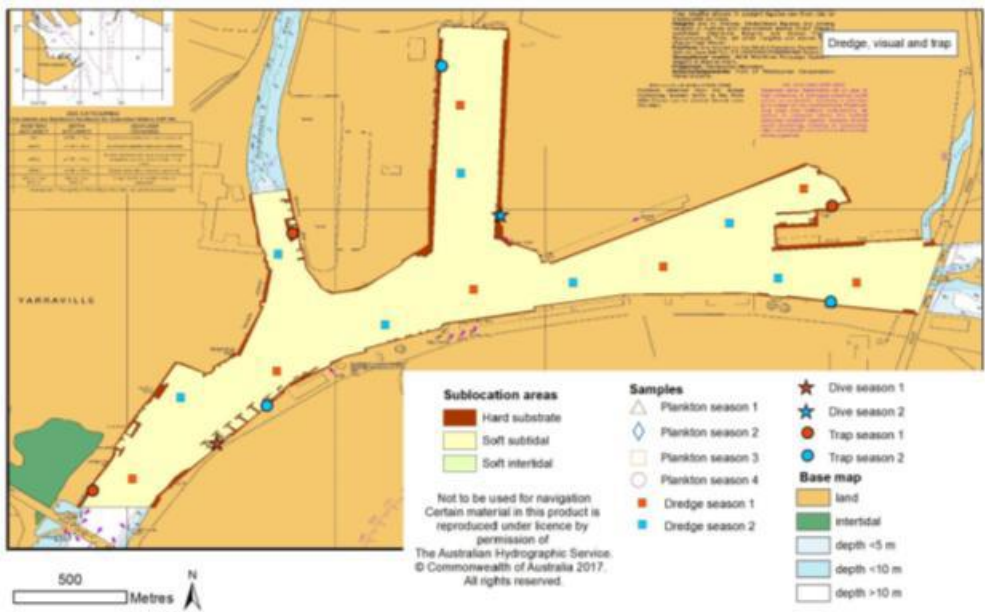
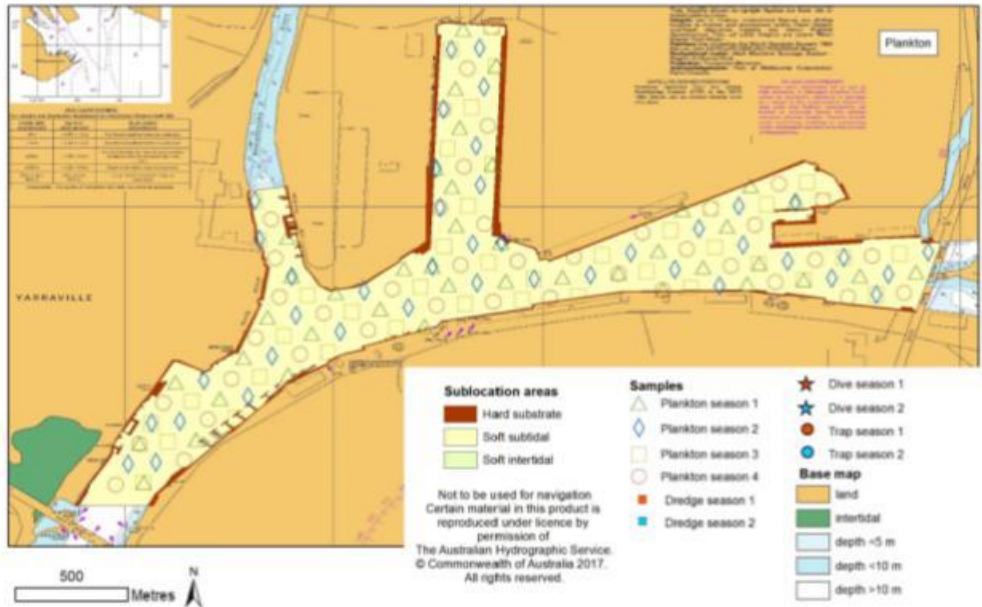
**Further notice:** Further notice to be issued.



## Chartlet 1 Survey Site Overview

This notice is a direction of the Harbour Master pursuant to section 232 of the *Marine Safety Act 2010* (Vic). The requirements of section 232(2) have been taken into account.

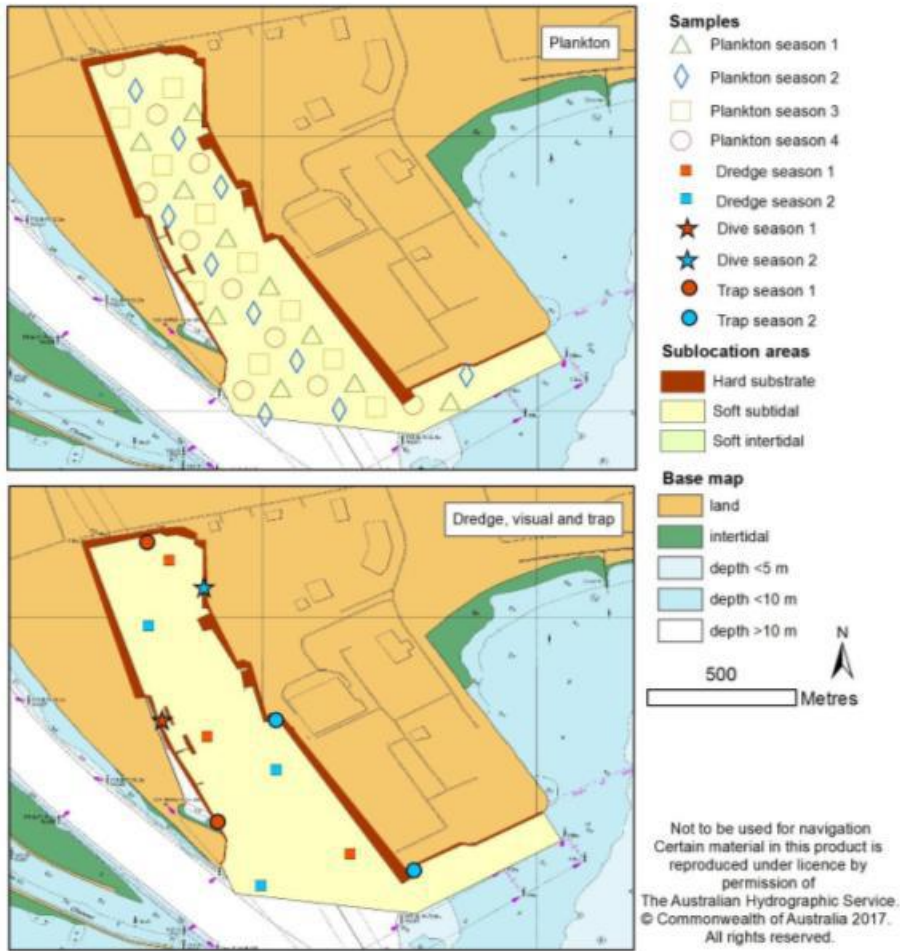
Victorian Notices to Mariners can be downloaded from the Victorian Ports Corporation (Melbourne) website [www.vicports.vic.gov.au](http://www.vicports.vic.gov.au)



### Chartlet 2 Yarra River Sites

This notice is a direction of the Harbour Master pursuant to section 232 of the *Marine Safety Act 2010* (Vic). The requirements of section 232(2) have been taken into account.

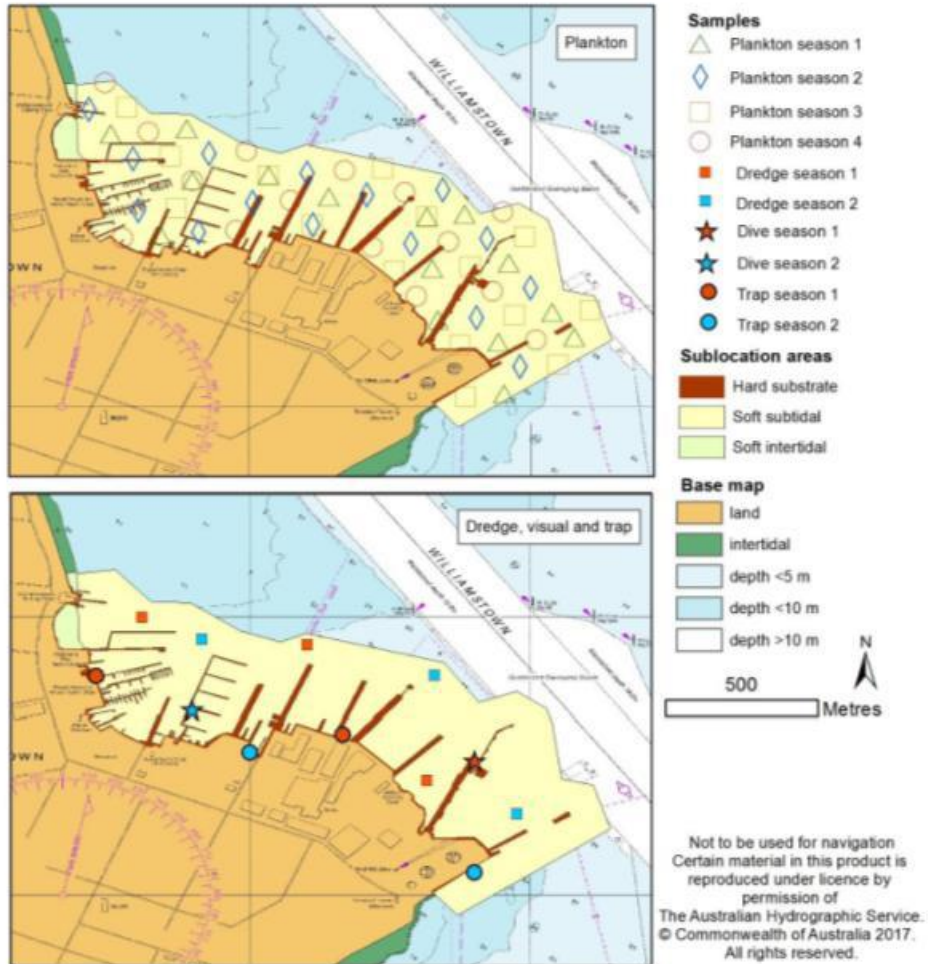
Victorian Notices to Mariners can be downloaded from the Victorian Ports Corporation (Melbourne) website [www.vicports.vic.gov.au](http://www.vicports.vic.gov.au)



### Chartlet 3 Webb Dock Sites

This notice is a direction of the Harbour Master pursuant to section 232 of the *Marine Safety Act 2010* (Vic)  
 The requirements of section 232(2) have been taken into account.

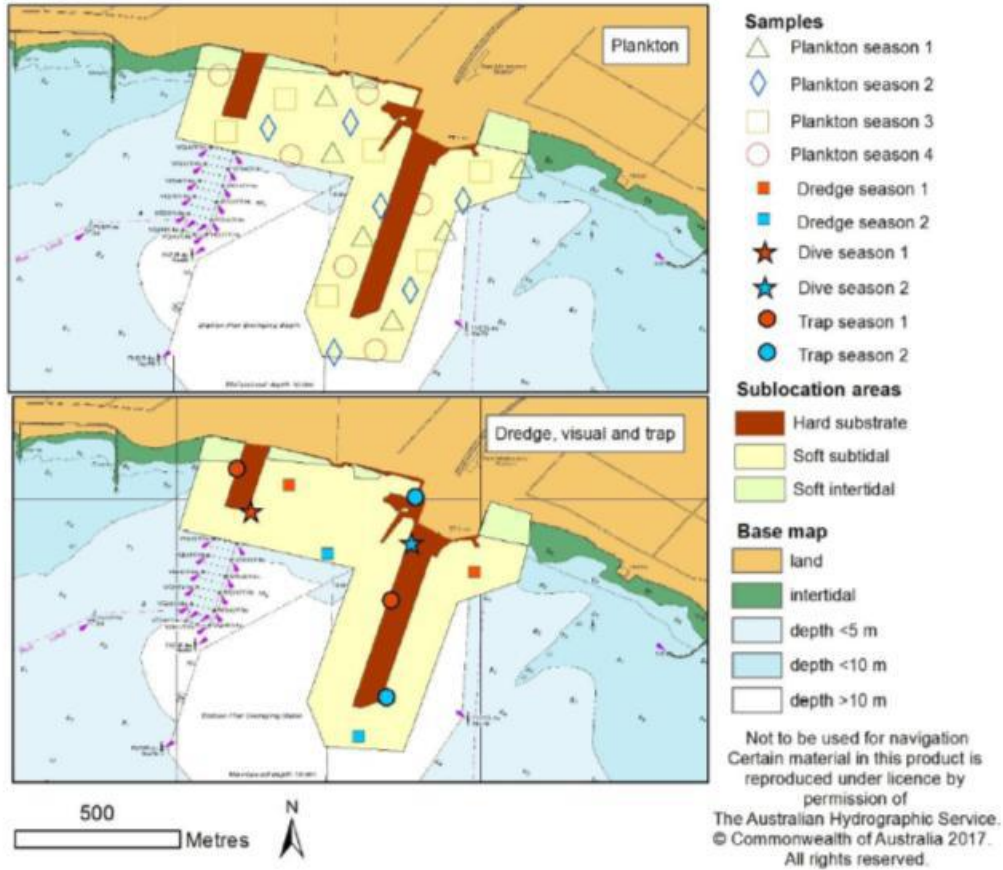
Victorian Notices to Mariners can be downloaded from the Victorian Ports Corporation (Melbourne) website  
[www.vicports.vic.gov.au](http://www.vicports.vic.gov.au)



**Chartlet 4 Williamstown Sites**

This notice is a direction of the Harbour Master pursuant to section 232 of the *Marine Safety Act 2010* (Vic)  
 The requirements of section 232(2) have been taken into account.

Victorian Notices to Mariners can be downloaded from the Victorian Ports Corporation (Melbourne) website  
[www.vicports.vic.gov.au](http://www.vicports.vic.gov.au)



### Chartlet 5 Station Pier Sites

This notice is a direction of the Harbour Master pursuant to section 232 of the *Marine Safety Act 2010* (Vic)  
 The requirements of section 232(2) have been taken into account.

Victorian Notices to Mariners can be downloaded from the Victorian Ports Corporation (Melbourne) website  
[www.vicports.vic.gov.au](http://www.vicports.vic.gov.au)



**Photo 1 Swell**

A handwritten signature in blue ink, appearing to read 'Andrew Hays'.

**Andrew Hays  
Deputy Harbour Master**

This notice is a direction of the Harbour Master pursuant to section 232 of the *Marine Safety Act 2010* (Vic)  
The requirements of section 232(2) have been taken into account.

---

Victorian Notices to Mariners can be downloaded from the Victorian Ports Corporation (Melbourne) website  
[www.vicports.vic.gov.au](http://www.vicports.vic.gov.au)