

Melbourne, 17 August 2017

Australia – Victoria
No. 215 (T) – 2017
**PORT OF MELBOURNE – YARRAVILLE 6
TEMPORARY BERTH CLOSURE**

Date: 17 August 2017

Refers: NTM 183 (T) and is cancelled.

Details: Port users are advised that rehabilitation works at Yarraville 6 are re-scheduled from 0600 on 30 August 2017 until 1800 on 13 September 2017 resulting in a temporary closure of the berth during this period.

Works will involve the demolition of a section of the wharf from 0 m to 30 m chainage. During this period mooring piles and bollards at 6 Yarraville will not be available to vessels berthing at 5 Yarraville. Works will be conducted during daylight hours.

For more information, please contact Melbourne VTS on 9644 9700 or VHF Channel 12.

Mariners are advised to navigate with caution in the vicinity of 5 & 6 Yarraville during the period of works, and not approach within 25 m of the demolition work area.

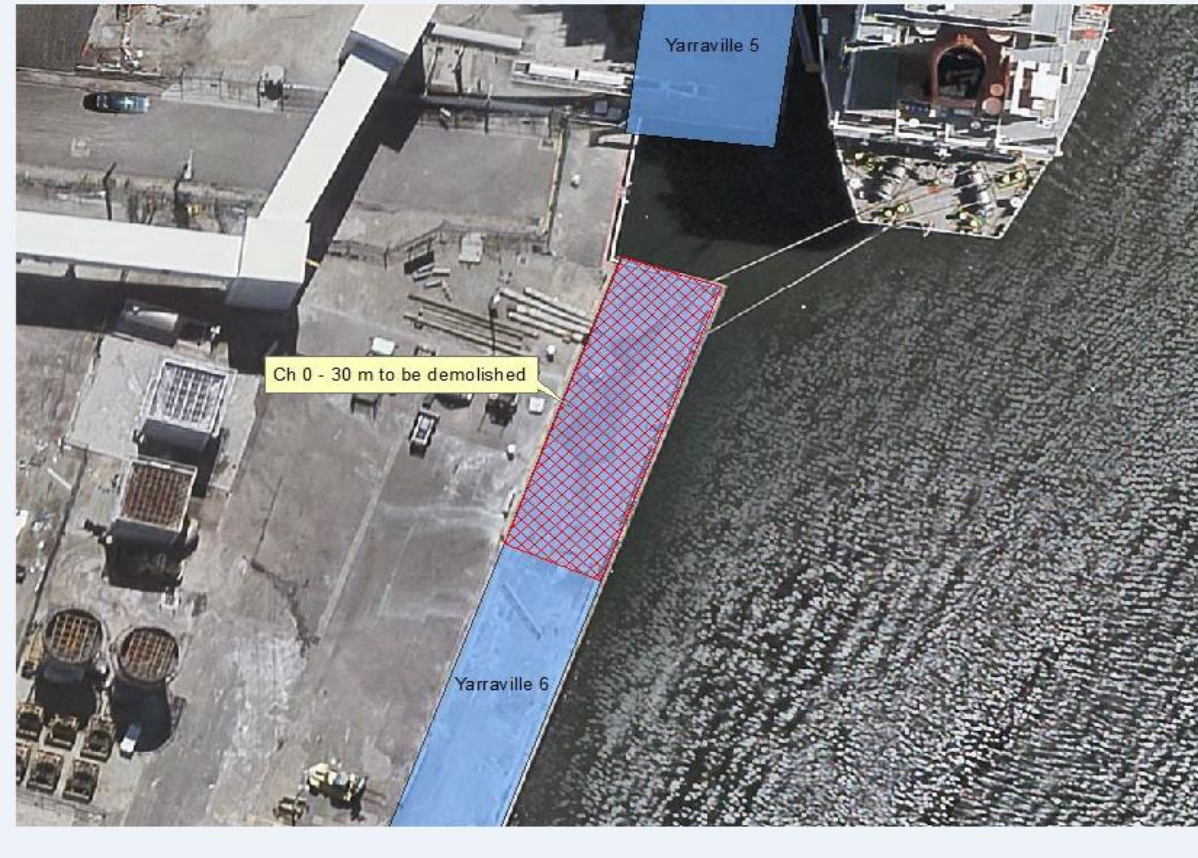
Charts affected: AUS 154

Further notice: Further notice to be issued.



Andrew Hays

Deputy Harbour Master



This notice is a direction of the Harbour Master pursuant to section 232 of the *Marine Safety Act 2010* (Vic)
The requirements of section 232(2) have been taken into account.

Victorian Notices to Mariners can be downloaded from the Victorian Ports Corporation (Melbourne) website
www.vicports.vic.gov.au