

Melbourne, 15 September 2017

Australia – Victoria

No. 234 (T) – 2017

PORT MELBOURNE YARRA RIVER

YARRA RIVER CLOSURE FOR VESSELS GREATER THAN 35M LOA 29 SEPTEMBER 2017

Date: 15 September 2017

Refers: N/A

Details: Port Users are advised that the Yarra River will be closed to vessels greater than 35m Length Over All (LOA), between Beacons 31/32 and Southern Dripline of the West Gate Bridge from 0800 until 1800 on Friday 29 September 2017. Due to maintenance works involving diving to the services protection over the WAG pipeline approximately 100 meters south of Beacons 35/36.

Vessels less than 35m LOA may transit past the works area on the western side of the channel in an area extending 40 metres from the towline of the western side of the channel (see graphic below). All vessels transiting past the works area shall reduce speed so as to create no vessel wash.

For more details please contact Melbourne VTS on 96449700 or on VHF Channel 12.

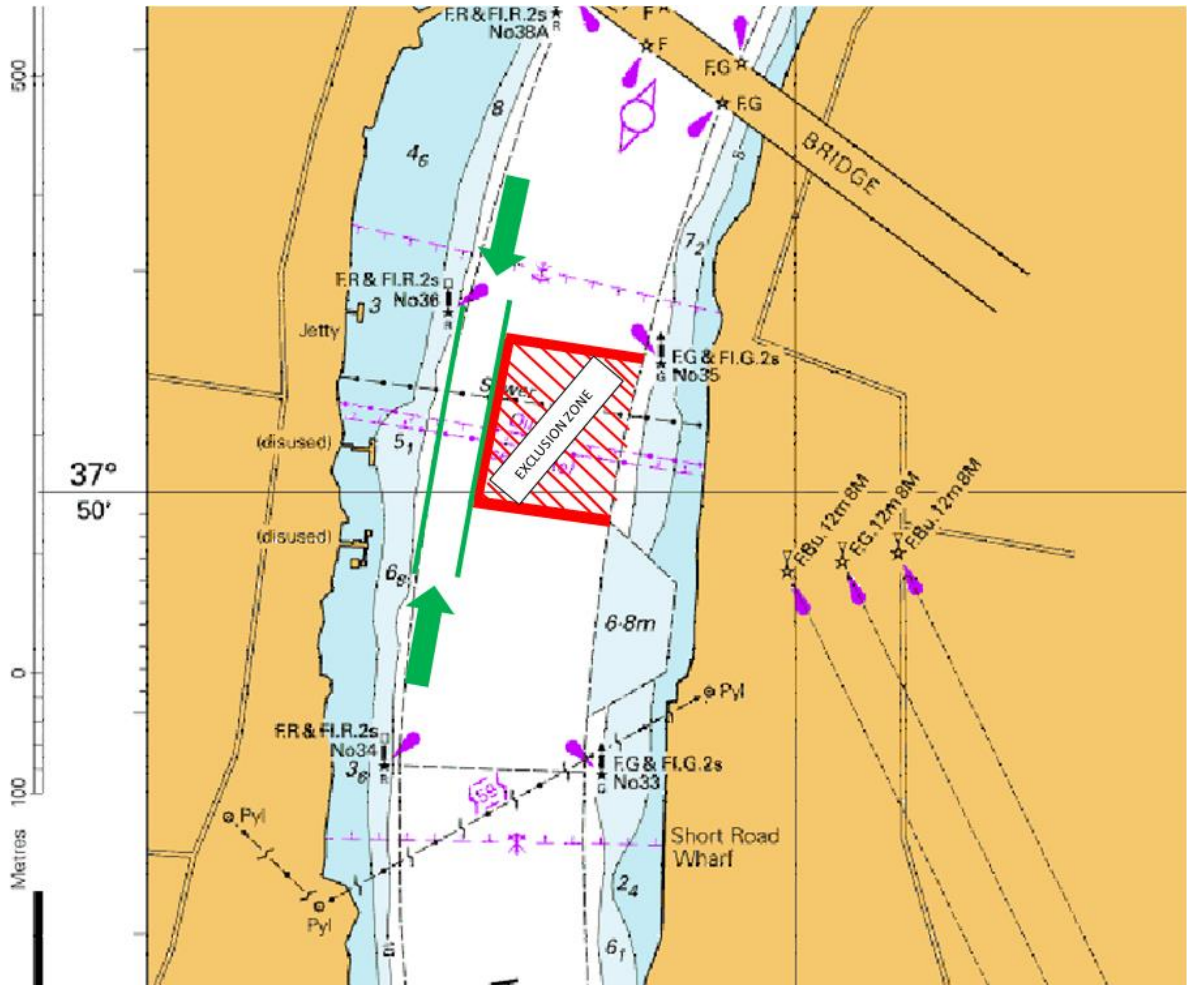
Port Users are advised to plan movements for vessels with a LOA greater than 35m greater around the Yarra River Closure times and mariners of vessels less than 35m LOA shall reduce speed so as to create no vessel wash and navigate with extreme caution when in the vicinity of the works.

Charts &

Publications

affected: AUS 154

Further notice: Further Notice will be issued.



Andrew Hays
Deputy Harbour Master

This notice is a direction of the Harbour Master pursuant to section 232 of the *Marine Safety Act 2010* (Vic).
 The requirements of section 232(2) have been taken into account.

Victorian Notices to Mariners can be downloaded from the Victorian Ports Corporation (Melbourne) website
www.vicports.vic.gov.au