



Victorian Regional Channels
Authority

VICTORIAN NOTICE TO MARINERS

The following Notice to Mariners is published for general information.

GEELONG, 20 NOVEMBER 2017

AUSTRALIA – VICTORIA

NO. 298(T) - 2017

PORT OF GEELONG

NOTICE OF CHANNEL SAFETY IMPROVEMENT WORKS

Date: 20 November, 2017

Details: Channel Safety Improvement Works within Corio bay in the port of Geelong are scheduled to start around November 23, 2017 for a period of approximately 5 weeks. The area where the works will be conducted lies East of Beacon No 5 in the Corio Channel (see attached diagram). The work will be conducted by the 53 meter long jack up grab dipper dredger “Machiavelli” which will have several tugs and barges in attendance. The barges will be used for conveying the dredged material to the designated “disposal” ground North East of Point Wilson. The works are expected to be conducted on a 24 hour basis and the dredger and accompanying craft will display the appropriate day and night marks and lights as required by the International Collision Regulations.

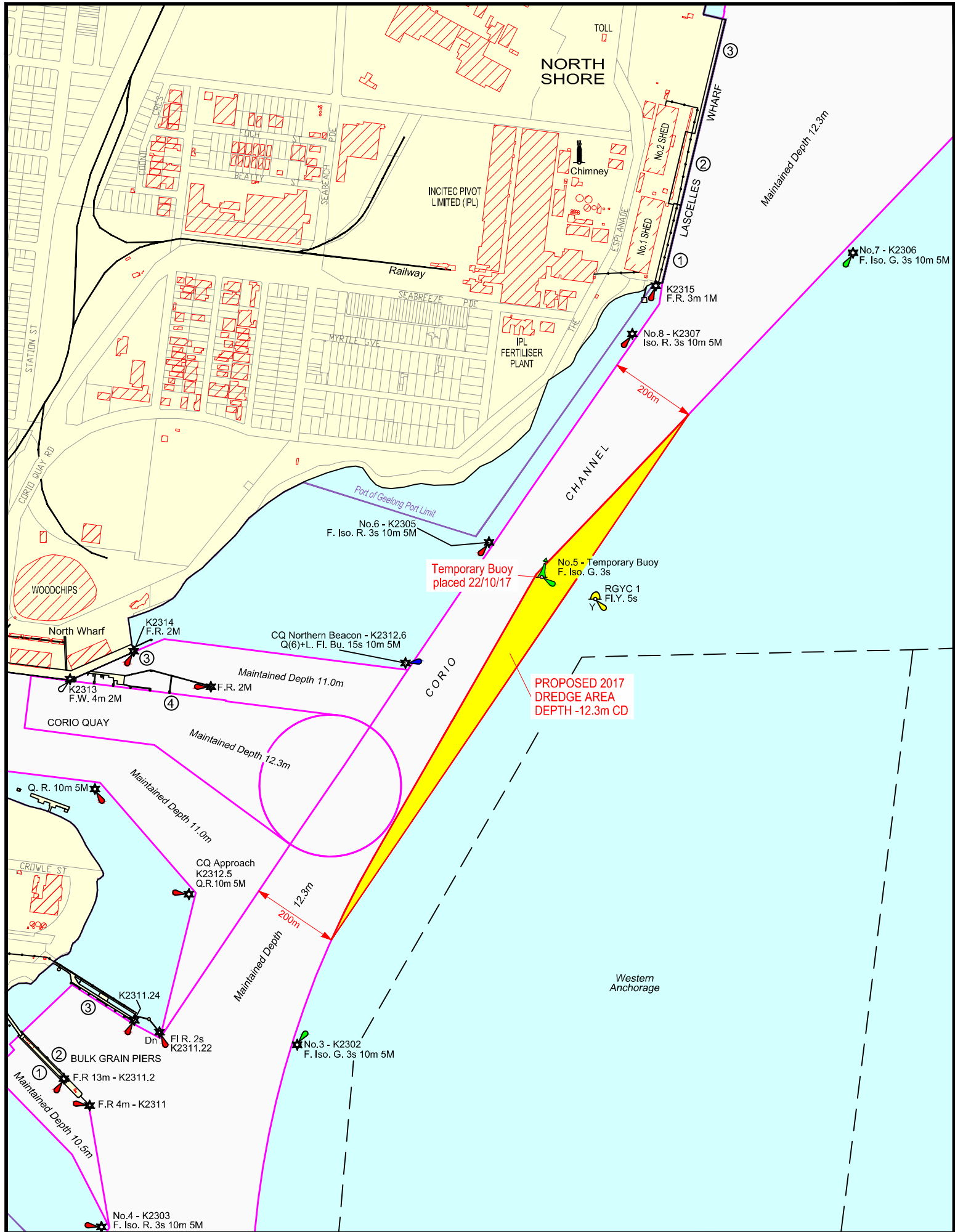
Masters of commercial ships using the channels of Geelong during the dredge operations are advised to maintain a strong maritime domain awareness of the movements of the disposal barges as they make their way between the vicinity of East of Beacon/Buoy No 5 in the Corio Channel and the Point Wilson disposal ground area. Actions like slowing down when passing (if requested) and communicating with the dredger/barges on VHF Channel 12 may need to be introduced into the vessel’s passage plan prior to entering or departing from the port of Geelong to avoid any possible close quarter situation from developing. Non-commercial mariners and all recreational craft are also reminded vide this Public Notice of their safety obligations and are requested not to navigate within a minimum distance 150 meters of the dredger and her accompanying craft at all times. The Duty Marine Controller at Geelong Harbour Control may be contacted at any time on VHF Channel 12 or on 03 5247 0300 for additional information.

**Charts &
Publications**

Affected: Aus 153.

Further Notice: Further Notices will be issued

**CAPTAIN DILIP ABRAHAM
HARBOUR MASTER
PORT OF GEELONG**



TOTAL
HYDROGRAPHIC
www.totalhydrographic.com.au
Tim Williams: 0467 055 005
Paul Bazalicki: 0417 253 557

LOCALITY MAP
VICTORIA
MELBOURNE
GEELONG

Victorian Regional Channels Authority
Level 2
235 Ryrle St,
Geelong, 3220
VICTORIA
Ph. 03 5225 3500
Fax. 03 5225 3599

MGA Zone 55

Scale in metres
0 100 200 300 400 500

LEGEND
Existing Shipping Channel
Proposed Dredge Area

Date: 23/10/2017
Drawn: P.B
Checked: D.A
Format: A4
Revision:
Sounding Datum: Chart Datum
Horizontal Datum: GDA94

GEELONG DREDGING PROGRAM 2017 PROPOSED DREDGE AREA
Drawing No.: VRCA 2017 Proposed Dredging NIM.dwg