

VICTORIAN NOTICE TO MARINERS

The following Notice to Mariners is published for general information.

GEELONG, 15 FEBRUARY 2018

AUSTRALIA - VICTORIA

NO. 072(T) - 2018

PORT OF GEELONG

VIRTUAL AIDS TO NAVIGATION IN CORIO CHANNEL

Date: Effective immediately.

Previous Notices NTM's No. 016(T)-2018 and No. 017(T)-2018 refer.

Details: Mariners are advised that 2 virtual ATONS have been established in Corio Channel to electronically indicate the positions of the temporarily deployed starboard hand buoys TB1 and TB2 as per previous Notices (see above).

TB 1	MMSI 995036043.....	Position:	38 ° 06'	38.80" S
				144 ° 22'	20.12" E
TB 2	MMSI 995036044.....	Position	38 ° 06'	00.51" S
				144 ° 22'	55.14" E

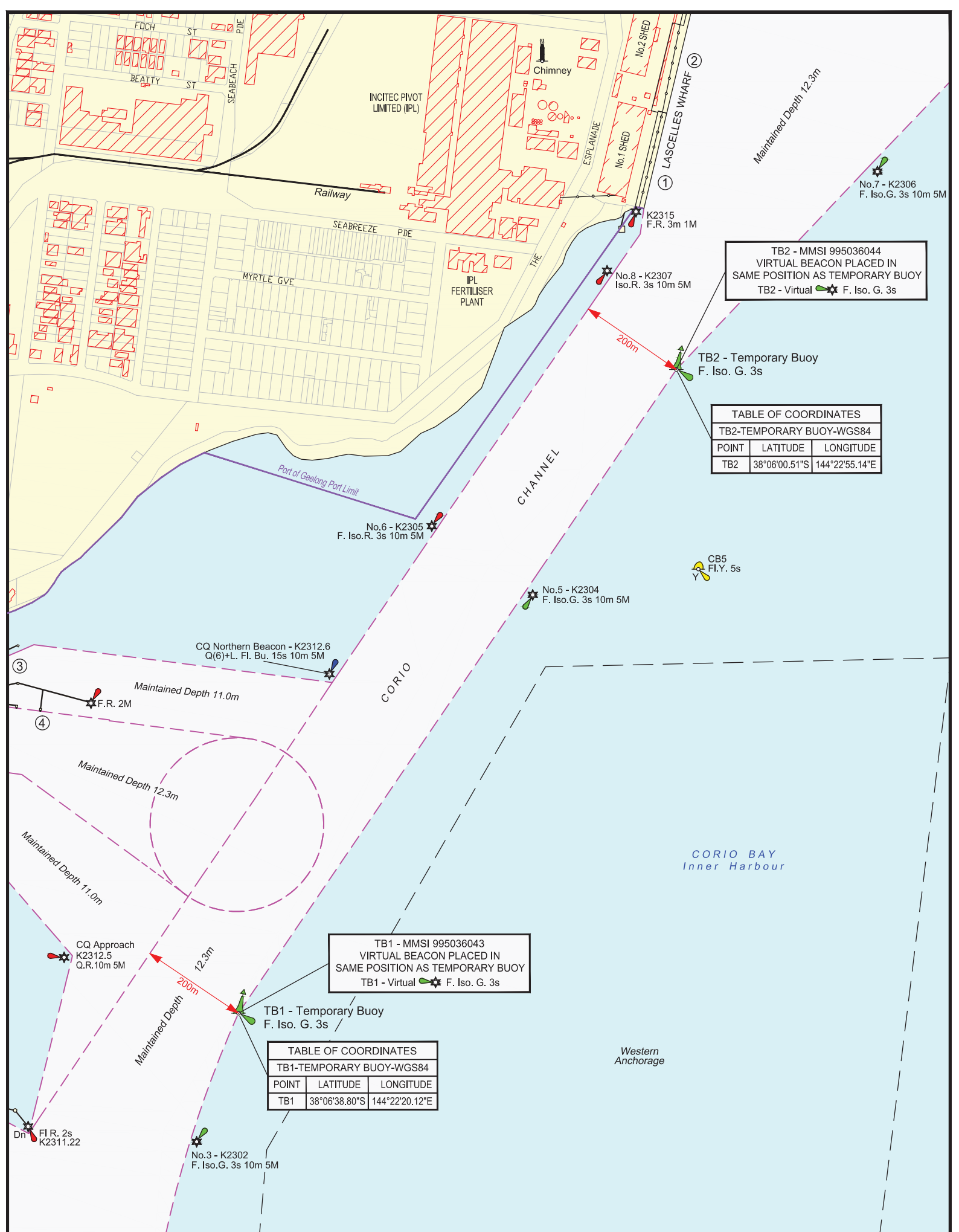
The virtual ATONS will be in place for as long as the temporary buoys are deployed and will be removed after further planned Channel Safety Improvement Works are conducted.

Charts & Publications Affected: AUS 153, see attached diagram.

Further Notice: Will be issued.



**CAPTAIN DILIP ABRAHAM
HARBOUR MASTER
PORT OF GEELONG**



TB2 - MMSI 995036044
VIRTUAL BEACON PLACED IN
SAME POSITION AS TEMPORARY BUOY
TB2 - Virtual F. Iso. G. 3s

TB2 - Temporary Buoy
F. Iso. G. 3s

TABLE OF COORDINATES		
TB2-TEMPORARY BUOY-WGS84		
POINT	LATITUDE	LONGITUDE
TB2	38°06'00.51"S	144°22'55.14"E

No.6 - K2305
F. Iso.R. 3s 10m 5M

No.5 - K2304
F. Iso.G. 3s 10m 5M

CQ Northern Beacon - K2312.6
Q(6)+L. Fl. Bu. 15s 10m 5M

Maintained Depth 11.0m
F.R. 2M

Maintained Depth 12.3m

Maintained Depth 11.0m

CQ Approach
K2312.5
Q.R. 10m 5M

TB1 - MMSI 995036043
VIRTUAL BEACON PLACED IN
SAME POSITION AS TEMPORARY BUOY
TB1 - Virtual F. Iso. G. 3s

TB1 - Temporary Buoy
F. Iso. G. 3s

TABLE OF COORDINATES		
TB1-TEMPORARY BUOY-WGS84		
POINT	LATITUDE	LONGITUDE
TB1	38°06'38.80"S	144°22'20.12"E

F.I.R. 2s
K2311.22

No.3 - K2302
F. Iso.G. 3s 10m 5M

TOTAL
HYDROGRAPHIC
www.totalhydrographic.com.au
Tim Williams: 0467 055 005
Paul Bazalicki: 0417 253 557

LOCALITY MAP
VICTORIA
MELBOURNE
GEELONG

MGA
Zone 55

Level 2
235 Ryrie St,
Geelong, 3220
VICTORIA
Ph. 03 5225 3500
Fax. 03 5225 3599

0 50 100 150 200 250
Scale in metres

LEGEND
Existing Shipping Channel

Date: 15/2/2018
Drawn: P.B
Checked: D.A
Format: A3
Revision:
Sounding Datum: Chart Datum
Horizontal Datum: GDA94

**CORIO BAY
INNER HARBOUR
INSTALLATION OF
VIRTUAL BEACONS
CORIO CHANNEL**
Drawing No.: VRCA0056.dwg