

Melbourne, 07 June 2018

Australia – Victoria

No. 193 (T) – 2018

PORT MELBOURNE

SWANSON DOCK ONE EAST – PRECAST PANEL REMOVAL

Date: 07 June 2018

Refers: NA

Details: Port users are advised that remediation works will take place at Swanson Dock One East at the 36 metre mark from 13 June to 18 June 2018.

The works include the removal of timber supports underneath the precast concrete panels on the wharf deck carried out from a pontoon extending 18 metres from the wharf face. The pontoon will remain alongside overnight and will be lit with a quick flashing yellow light.

Works will be carried out by Fitzgerald Constructions during daylight hours, the works supervisor can be contacted on mobile: 0417 331 631.

Further details can be obtained from Melbourne VTS on VHF channel 12.

Mariners are advised to navigate with additional caution when in the vicinity of the works.

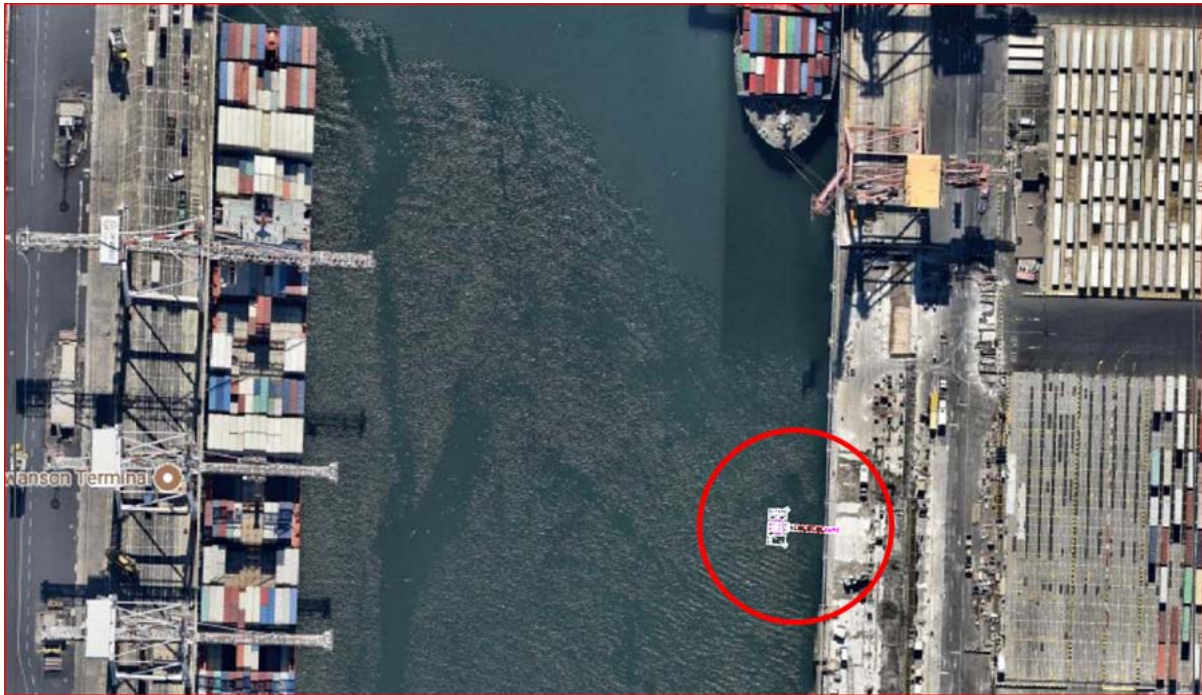
**Charts &
Publications
affected:**

AUS 154

Further notice: Further notice will be issued.



Andrew Hays
Deputy Harbour Master



This notice is a direction of the Harbour Master pursuant to section 232 of the *Marine Safety Act 2010* (Vic)
The requirements of section 232(2) have been taken into account.

Victorian Notices to Mariners can be downloaded from the Victorian Ports Corporation (Melbourne) website
www.vicports.vic.gov.au