

VICTORIAN NOTICES TO MARINERS

The following Notice to Mariners is published for general information.

MELBOURNE, 9 December 2011

AUSTRALIA – VICTORIA

No. 146(T) - 2011

PORT PHILLIP

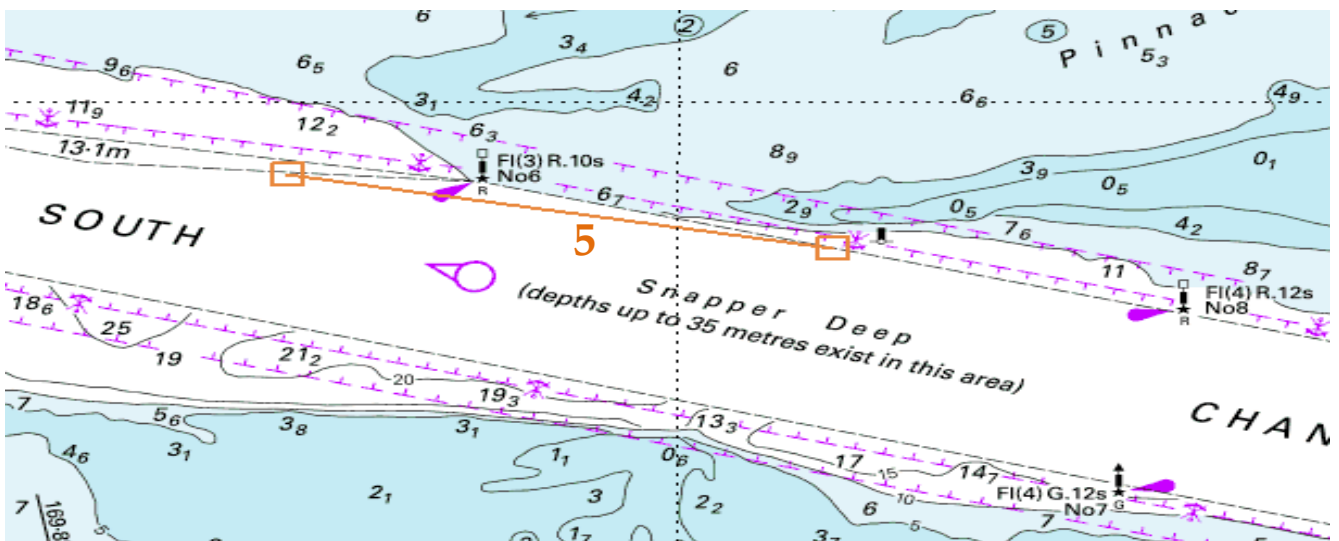
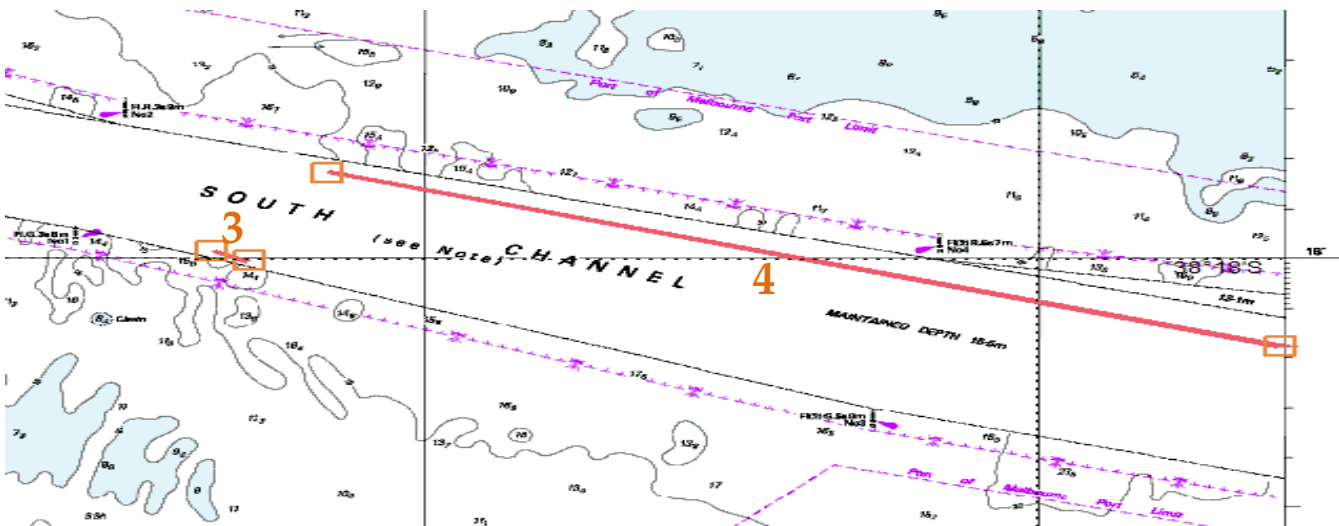
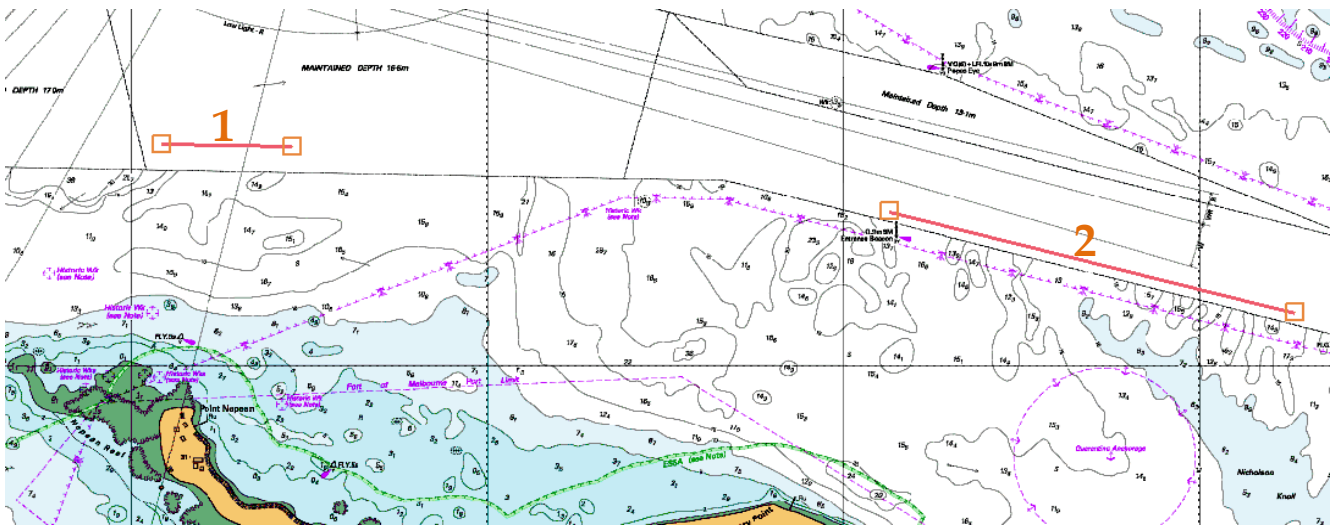
ESTABLISHMENT OF EXCLUSION ZONES - SOUTH CHANNEL

Date: 9 December 2011

Details: Mariners are advised that as a result of recent shoaling in the South Channel, five exclusion zones have been established and included in the DUKC system.

The following pairs of co-ordinates mark the exclusion zones:

1. Lat 38° 17.50'S, Long 144° 39.08'E to Lat 38° 17.50'S, Long 144° 39.45'E
(0.6 NM north of Point Nepean, approx. 100 M north of toe line)
2. Lat 38° 17.65'S, Long 144° 41.13'E to Lat 38° 17.88'S, Long 144° 42.27'E
(between Entrance Beacon & Bn. No 1, approx. 50 M north of toe line)
3. Lat 38° 17.99'S, Long 144° 42.65'E to Lat 38° 18.01'S, Long 144° 42.72'E
(between Bn. No 1 & Bn. No 3, approx. 25 M north of toe line)
4. Lat 38° 17.83'S, Long 144° 42.84'E to Lat 38° 18.17'S, Long 144° 44.51'E
(between Bn. No 2 & Bn. No 4, approx. 50 M south of toe line)
5. Lat 38° 18.38'S, Long 144° 46.35'E to Lat 38° 18.19'S, Long 144° 45.07'E
(between Bn. No 6 & Bn. No 8, approx. 80 M south of toe line)



Mariners are advised to navigate with caution in the vicinity of the exclusions zones

Charts & Publications affected: AUS 143, AUS 158.

Further notice: Further notice will be issued.

**DAVID SHENNAN
HARBOUR MASTER**