

VICTORIAN NOTICES TO MARINERS

The following Notice to Mariners is published for general information.

MELBOURNE, 15 October 2012

AUSTRALIA – VICTORIA

No. 141(T) - 2012

PORT OF MELBOURNE

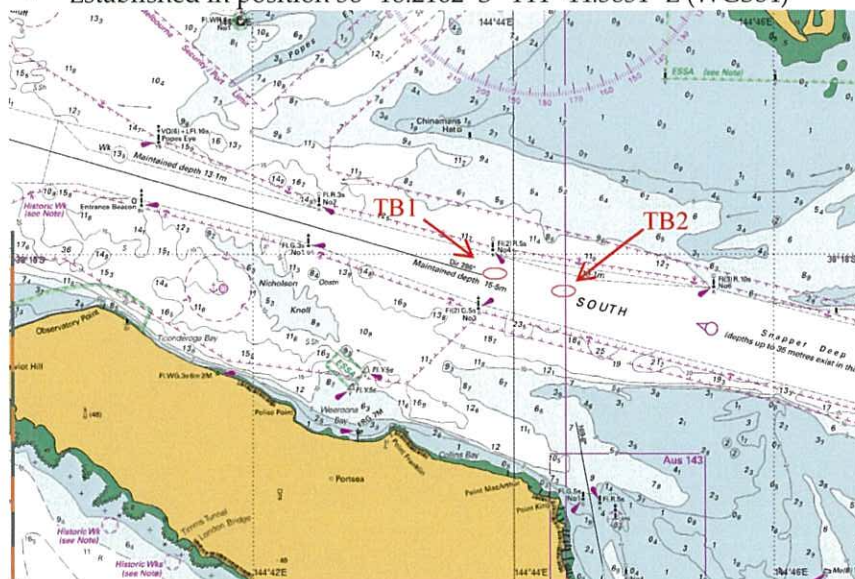
PORT PHILLIP - SOUTH CHANNEL – SHOAL AREAS –
TEMPORARY VIRTUAL AIDS TO NAVIGATION ESTABLISHED

Date: With immediate effect.

Former Notice 123(T) refers and is cancelled:

Details: Mariners are advised that recent surveys in the South Channel have identified areas of shoaling which are marked by two (2) virtual buoys in the locations indicated below:

- Identification Message - TB1
- Repositioned from 38° 18.112' S 144° 44.012' E (WGS84) approximately 200 metres west to 38° 18.1097' S 144° 43.8634' E (WGS84)
- Identification Message – TB2
- Established in position 38° 18.2162' S 144° 44.3851' E (WGS84)



A minimum depth of 15.2 metres exists in the vicinity and north of the virtual buoys. Deep draught vessels are advised to pass to the south of the buoy.

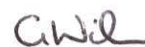
The transit of deep draught vessels of 11.6 m and over will continue to be managed by the DUKC.

Mariners are advised to navigate with caution in the vicinity of the virtual buoy.

**Charts
affected:**

AUS 143, AUS 144, AUS 158

Further notice: A further notice will be issued as required.



**GARY WILSON
HARBOUR MASTER**