

# VICTORIAN NOTICES TO MARINERS

The following Notice to Mariners is published for general information.

MELBOURNE, 28 June 2013

AUSTRALIA – VICTORIA

No. 087(T) - 2013

PORT OF MELBOURNE

PORT MELBOURNE CHANNEL – TRANSIT ONLY ZONE – BUOY REPLACEMENT AND BEACON  
INSTALLATION WORKS

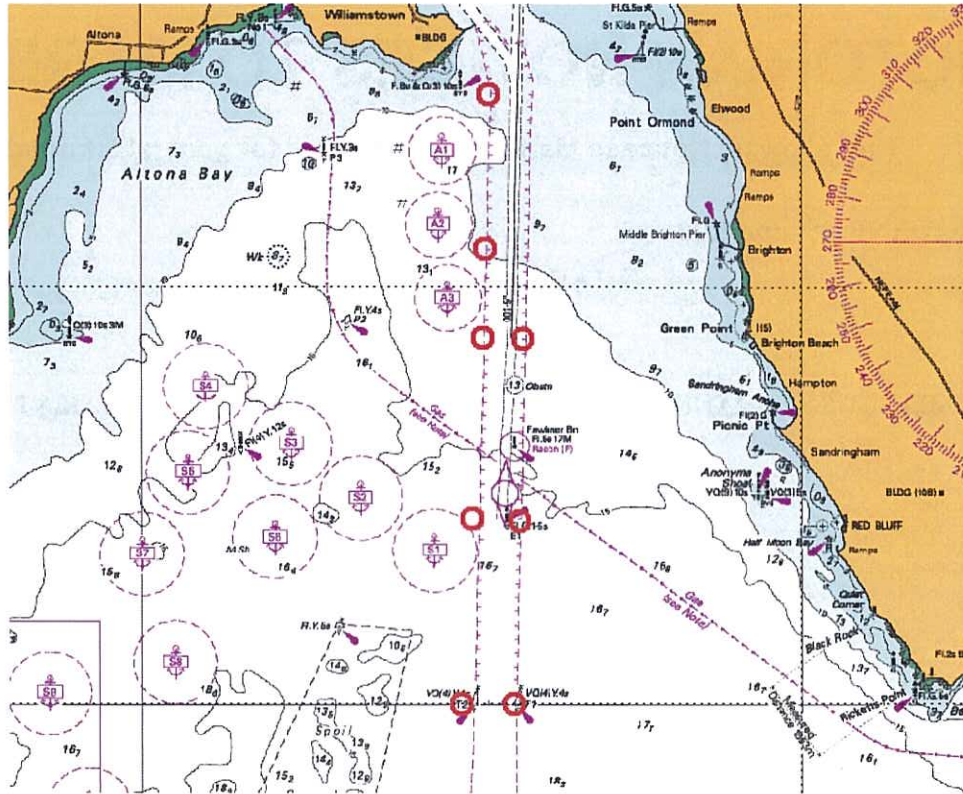
**Date:** 1 July 2013

**Details:** Mariners are advised that works will be undertaken to replace the yellow buoys marking the boundary of the Transit Only Zone (TOZ) with beacons, commencing 1 July 2013. Works will include pile driving, beacon fit outs and the removal of the marker buoys.

The works will require the use of the No. 147 Barge (55 m x 17 m x 3.6 m), the No. 162 Barge (18.5 m x 8 m x 2 m) and up to two (2) tugs as required.

Piling and new beacon fit-out works will occur in the vicinity of the following locations:

New TOZ Beacons	Latitude	Longitude
T1	38° 00.0000'	144° 55.6561'
T2	38° 00.0000'	144° 54.8694'
T9	37° 57.8052'	144° 55.7290'
T10	37° 57.7736'	144° 55.0310'
T15	37° 55.6192'	144° 55.8013'
T16	37° 55.5990'	144° 55.1882'
T20	37° 54.5406'	144° 55.2233'
T26	37° 52.6845'	144° 55.2848'



The following buoys will be removed as part of these works:

TOZ Buoy	Latitude	Longitude
T1	38° 00.005'	144° 55.656'
T2	38° 00.010'	144° 55.040'
T3	37° 59.444'	144° 55.675'
T4	37° 59.432'	144° 55.061'
T5	37° 58.872'	144° 55.694'
T6	37° 58.859'	144° 55.080'
T7	37° 58.299'	144° 55.713'
T8	37° 58.286'	144° 55.099'
T9	37° 57.805'	144° 55.729'
T10	37° 57.800'	144° 55.120'
T11	37° 57.319'	144° 55.745'
T12	37° 57.306'	144° 55.132'

TOZ Buoy	Latitude	Longitude
T13	37° 56.583'	144° 55.770'
T14	37° 56.570'	144° 55.156'
T15	37° 55.906'	144° 55.792'
T16	37° 55.893'	144° 55.167'
T17	37° 55.401'	144° 55.809'
T18	37° 55.389'	144° 55.195'
T20	37° 54.541'	144° 55.223'
T22	37° 53.849'	144° 55.247'
T24	37° 53.181'	144° 55.268'
T26	37° 52.684'	144° 55.285'
T28	37° 52.306'	144° 55.193'

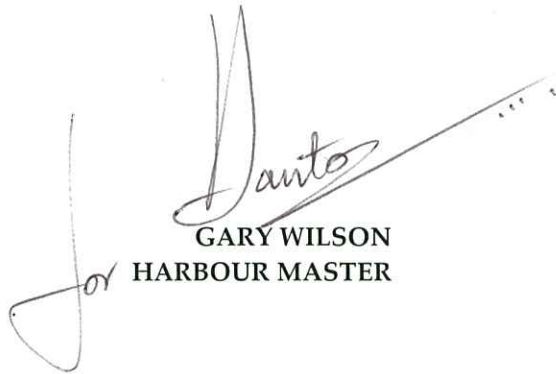
All operations will be conducted during daytime hours with all plant returning to shore each evening. These works are scheduled for completion on or around 9 September 2013 and will not impact commercial shipping in the Port Melbourne Channels.

Further information can be obtained from Gary Riley, Supervisor Waterway Constructions, on 0407 323 007 or Channel 12.

**Mariners are advised to navigate with caution in the vicinity of the works.**

**Charts & Publications affected:** AUS 143, 154 and 155

**Further notice:** Further notice will be issued.



GARY WILSON  
HARBOUR MASTER

This notice is a direction of the Harbour Master pursuant to section 232 of the Marine Safety Act 2010.  
The requirements of section 232(2) have been taken into account.

---

Victorian Notices to Mariners can be downloaded from the Port of Melbourne Corporation website, [www.portofmelbourne.com](http://www.portofmelbourne.com)