

VICTORIAN NOTICES TO MARINERS

The following Notice to Mariners is published for general information.

MELBOURNE, 7 August 2013

AUSTRALIA – VICTORIA

No. 109(T) - 2013

PORT OF MELBOURNE

SOUTH CHANNEL – HOVELL PILE BELL-MOUTH – BEACON INSTALLATION WORKS

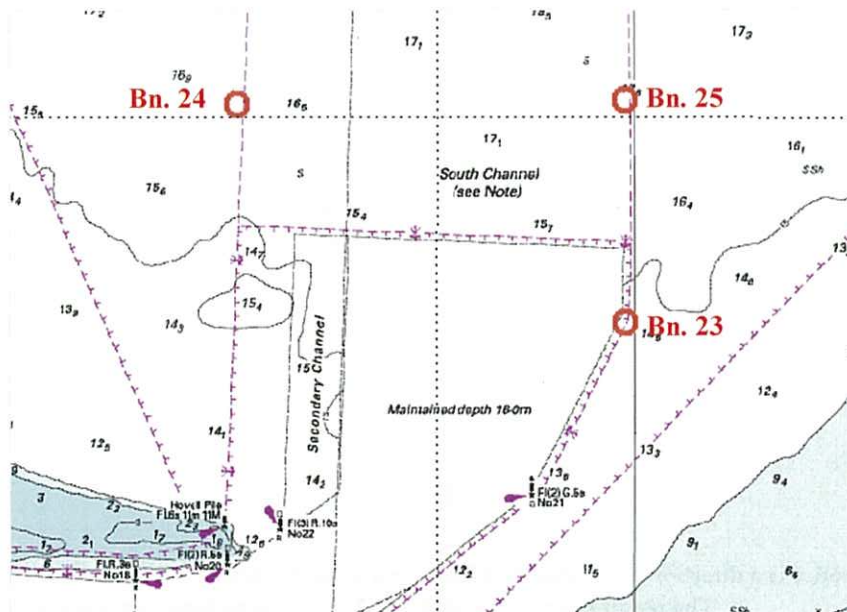
Date: 7 August 2013

Details: Mariners are advised that beacon installation works will be undertaken in the South Channel in the vicinity of Hovell Pile and are scheduled to commence on the 7 August 2013.

The works, including piling and beacon fit outs, will require the use of the No. 147 Barge (55 m x 17 m x 3.6 m), the No. 162 Barge (18.5 m x 8 m x 2 m) and up to two (2) tugs as required.

Piling and new beacon fit-out works will occur in the vicinity of the following locations:

New Beacons	Latitude	Longitude
23	38°18.8071'	144°55.9472'
24	38° 17.9283'	144°53.9226'
25	38° 17.9283'	144° 55.9472'



All operations will be conducted during daytime hours with all plant returning to shore or a mooring at Capel Sound each evening. The beacons will be marked with temporary green or red flashing lights during construction works.


These works will not impact commercial shipping in the South Channel and are scheduled for completion on or around early November 2013.

Further information can be obtained from Gary Riley, Supervisor Waterway Constructions, on 0407 323 007 or Channel 12.

Mariners are advised to navigate with caution in the vicinity of the works.

**Charts &
Publications
affected:** AUS 143 and 158.

Further notice: Further notice will be issued.



**GARY WILSON
HARBOUR MASTER**

This notice is a direction of the Harbour Master pursuant to section 232 of the Marine Safety Act 2010.
The requirements of section 232(2) have been taken into account.