



VICTORIAN NOTICES TO MARINERS

The following Notice to Mariners is published for general information.

MELBOURNE, 11 November 2013

AUSTRALIA – VICTORIA

No. 149 - 2013

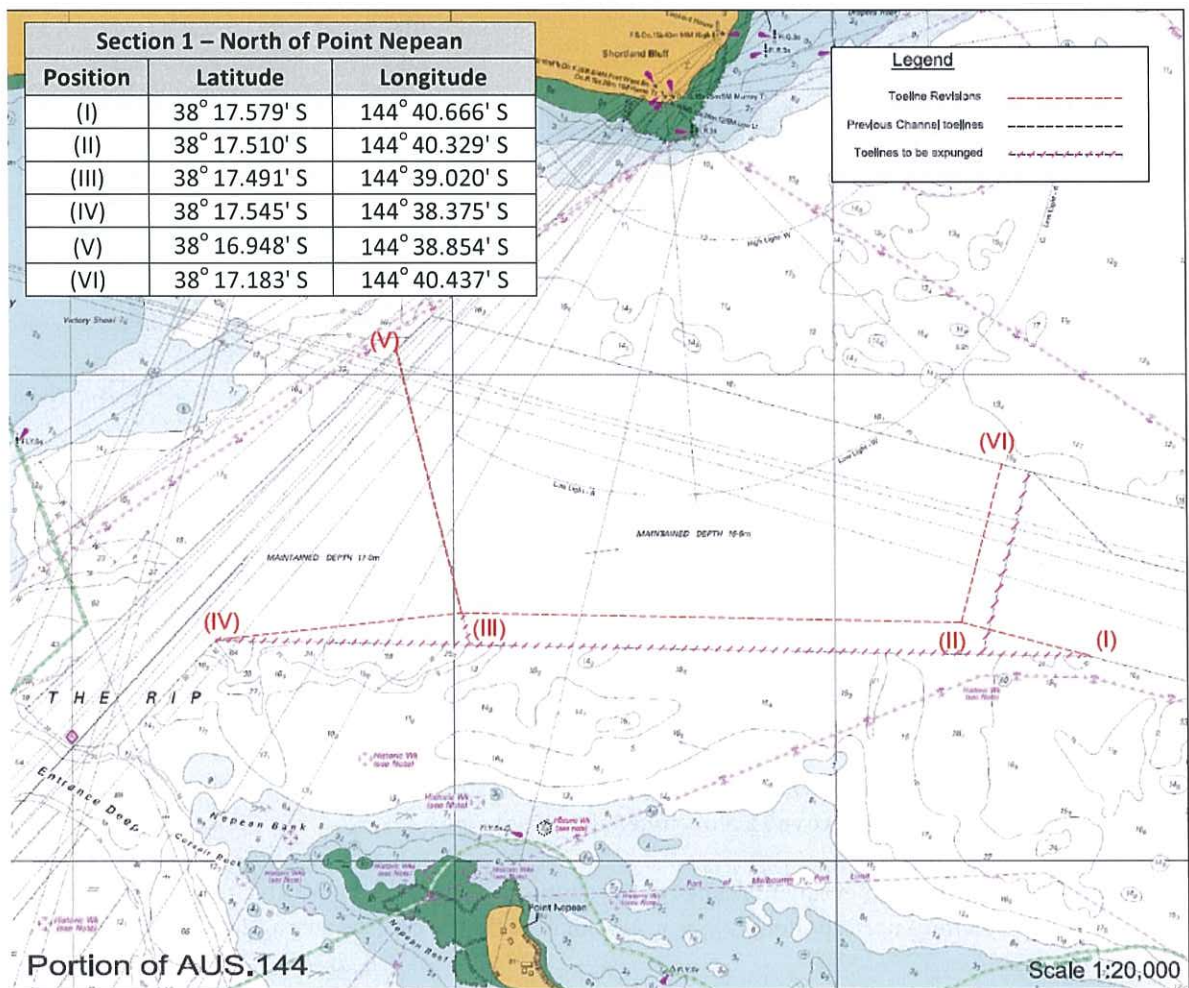
PORT OF MELBOURNE

PORT PHILLIP - SOUTH CHANNEL – AMENDMENT TO TOE-LINES

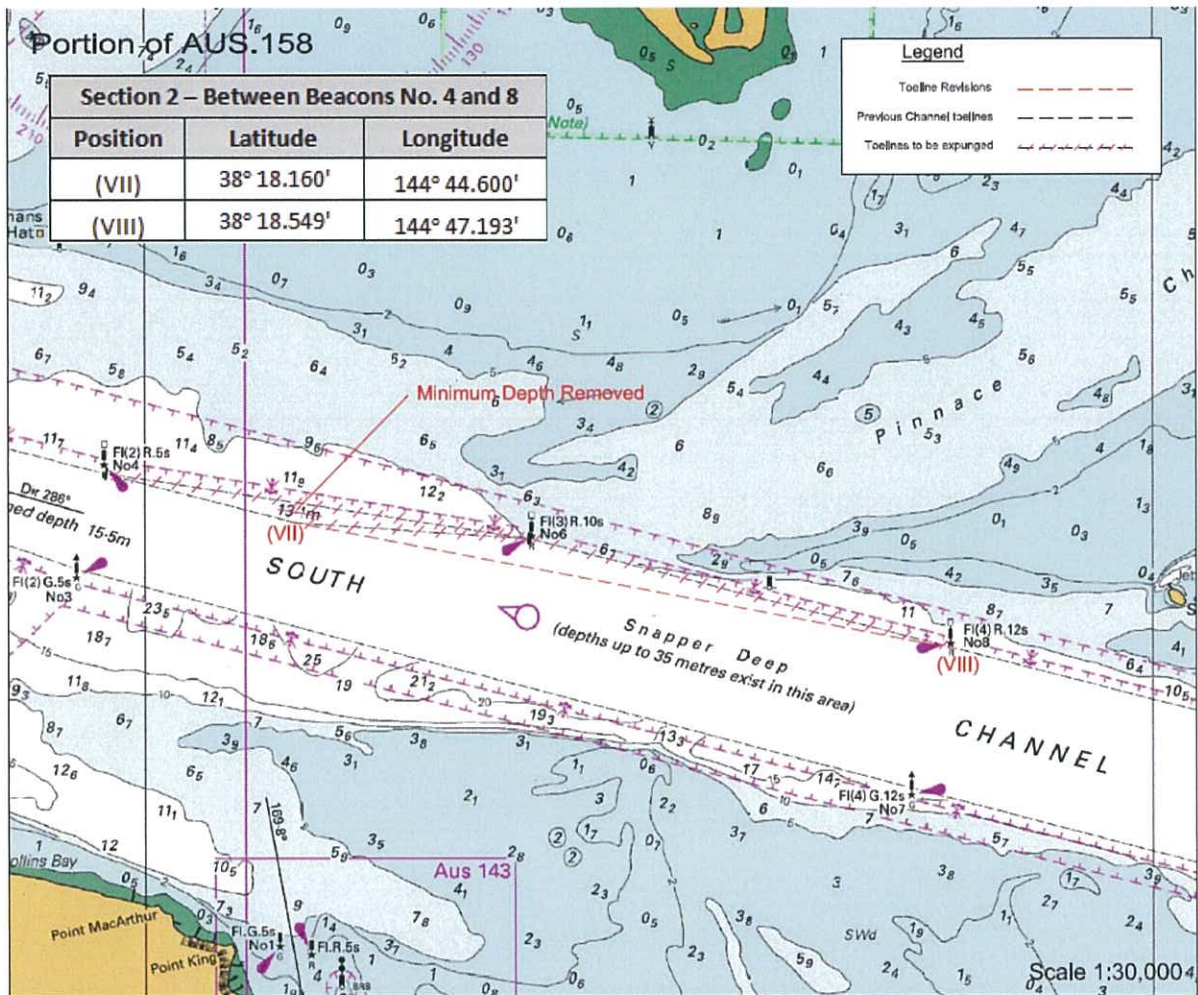
Date: 11 November 2013.

Details: Mariners are advised two (2) sections of the South Channel toe-line have been amended, effective 11 November 2013.

The first amendment relates to the southern section of the South Channel toe-line in the vicinity north of Point Nepean, as detailed by the coordinates and chart below:



The second amendment relates to the northern section of the South Channel toe-line in the vicinity between No. 4 and No. 8 Beacon, as detailed by the coordinates and chart below:



The position of the temporary virtual aids to navigation 'TB1', 'TB2' and 'TB3' referred to in Notice No. 028(T) – 2013 and Notice No. 141(T) 2012 remained unchanged.

Mariners are advised to navigate with caution in the vicinity of the revised toe-lines.

Charts affected: AUS 143, AUS 144, AUS 158

Further notice: No further notice will be issued.

G. Wilson
GARY WILSON
HARBOUR MASTER

This notice is a direction of the Harbour Master pursuant to section 232 of the Marine Safety Act 2010.
 The requirements of section 232(2) have been taken into account.